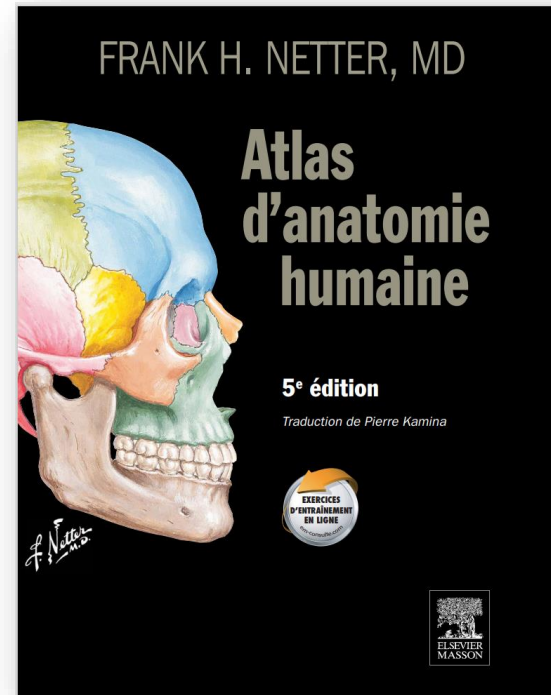


# Introduction à l'anatomie

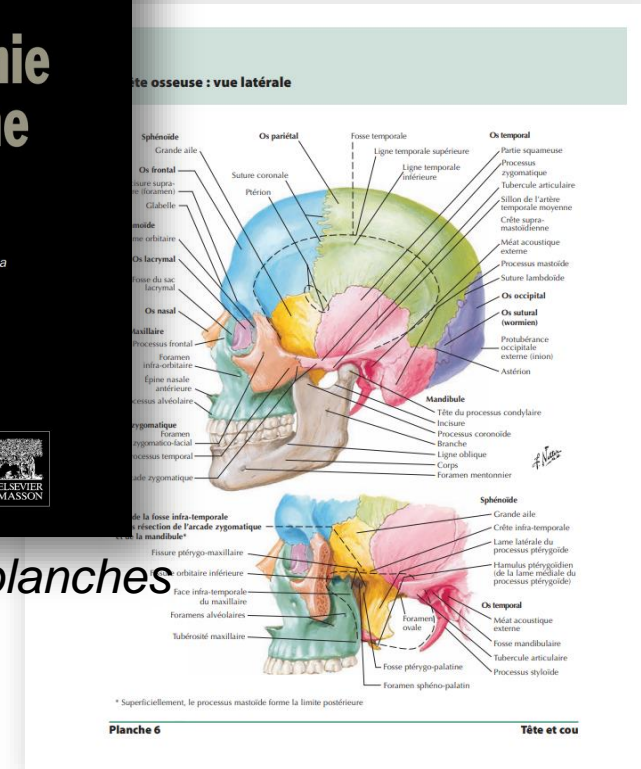
- Ouvrages : **Netter**, livres des Pr (DePeretti, Baqué)
- Logiciel : **Visible Body**
- Méthode : **Schémas ! et étymologie**



Modèles 3D pour  
structures  
anatomiques



*Le Netter, recueil de planches*



ACADÉMIE  
NATIONALE  
DE MÉDECINE



Wiktionnaire

Dico Académie



# **Système Nerveux**

## Partie 1 – Système Nerveux Central

Elyes Polydor

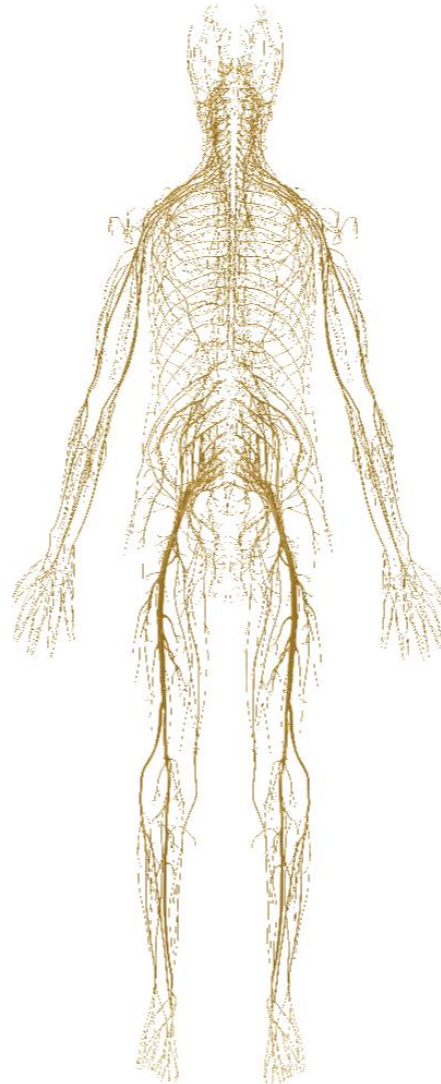
Pled

# Le Système Nerveux c'est quoi ?

SNC



SNP



SNV



# Système Nerveux Central (SNC)

*Encéphale*



*Moelle Spinale*

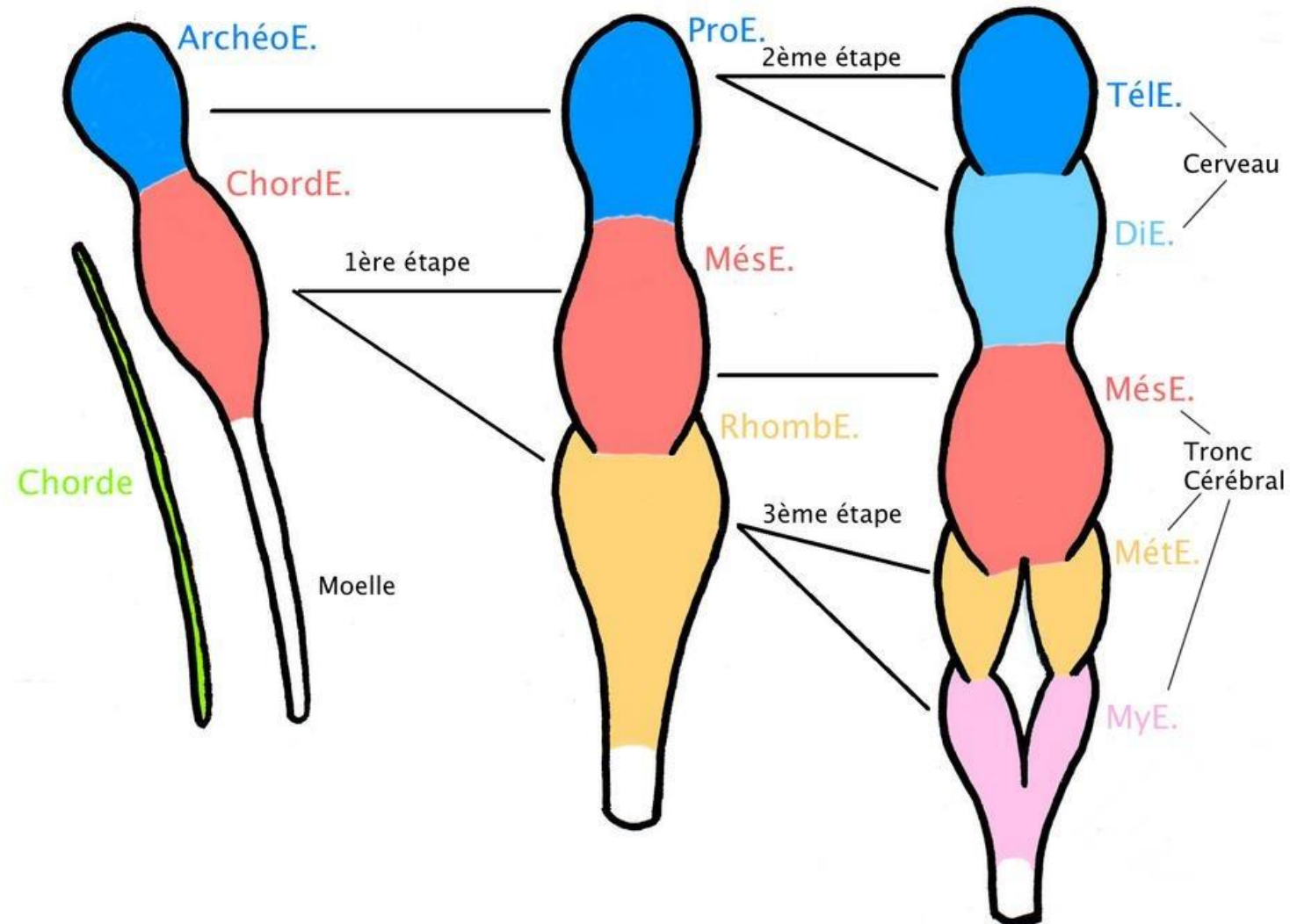


# ORGANOGENESE



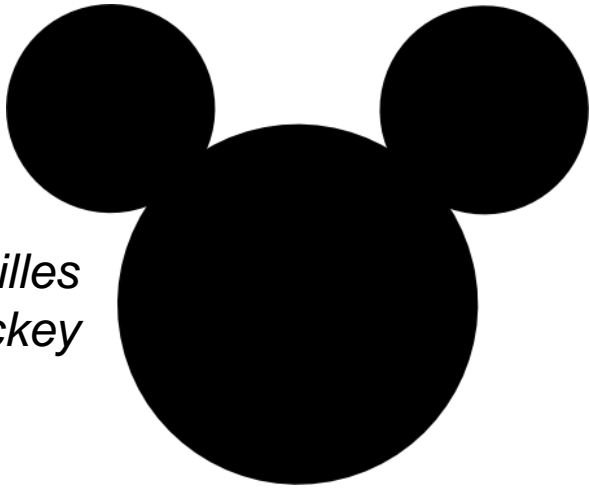


# Organogénèse Encéphale



# Organogénèse Encéphale : évolution Télecéphale

*Division en oreilles  
de Mickey*



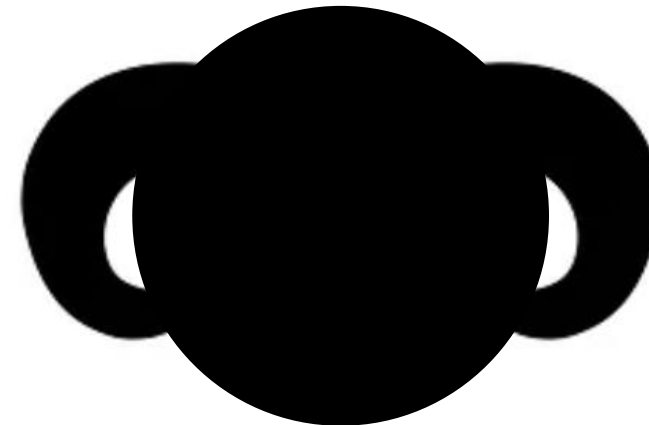
*Bascule en oreilles  
de Bunny*



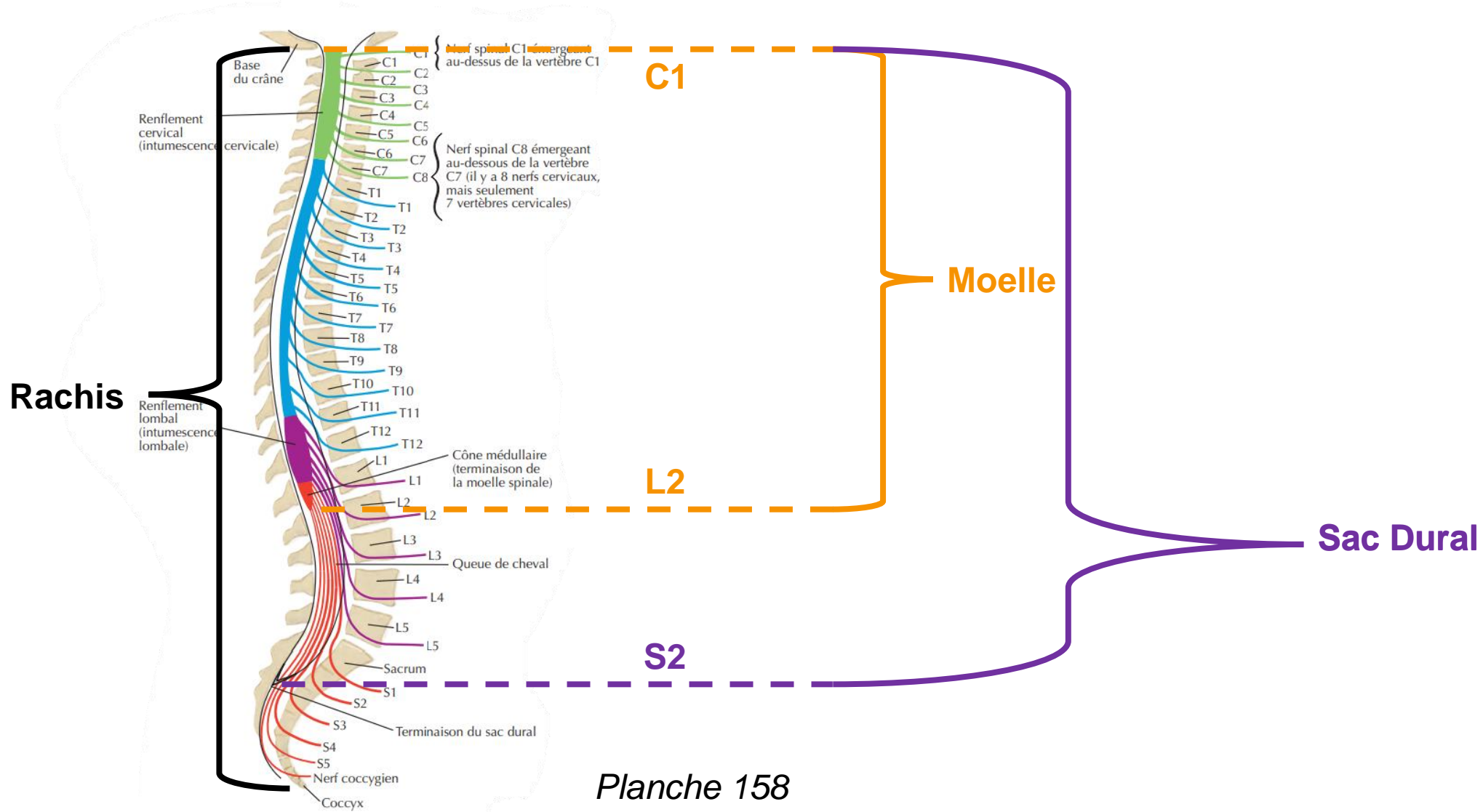
*Rotation en corne de  
Bélier*



*Fusion au DiE*



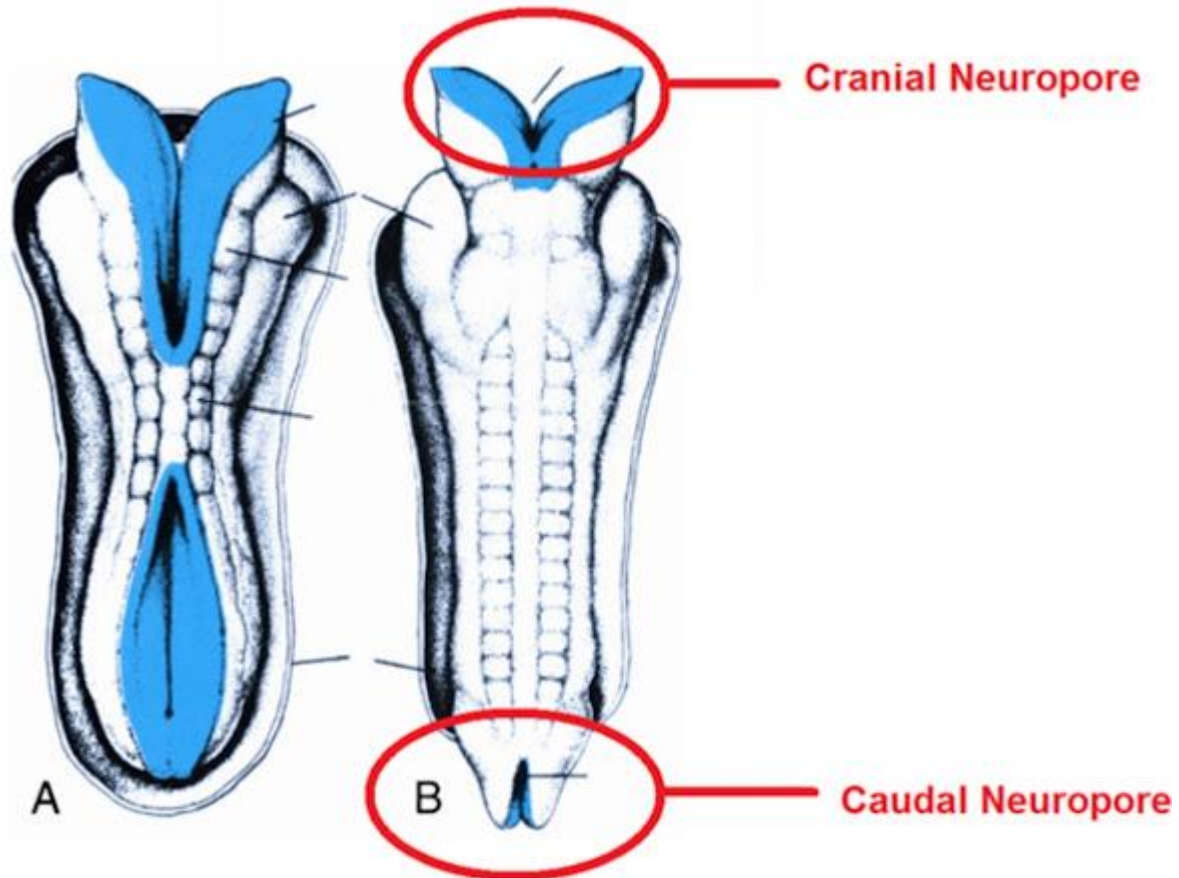
# Organogénèse Moelle : asymétrie croissance



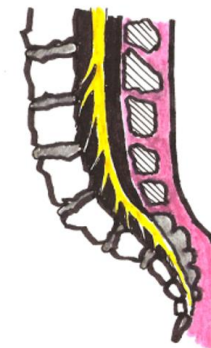




# Applications Patho



*Non fermeture neuropore ant = anencéphalie*



**1**  
SPINA NORMALE



**2**  
SPINA BIFIDA OCCULTA



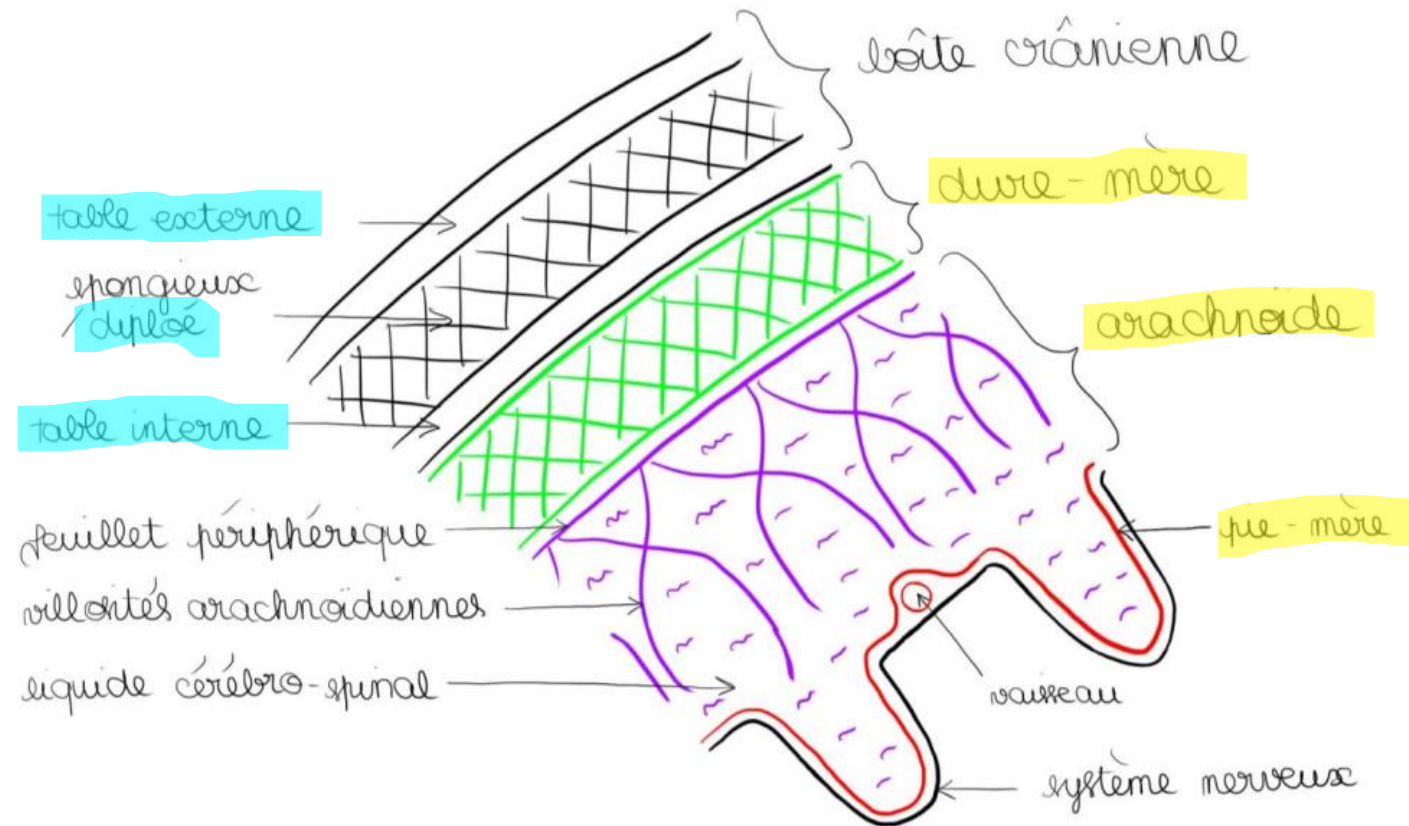
**3**  
MENINGOCELE



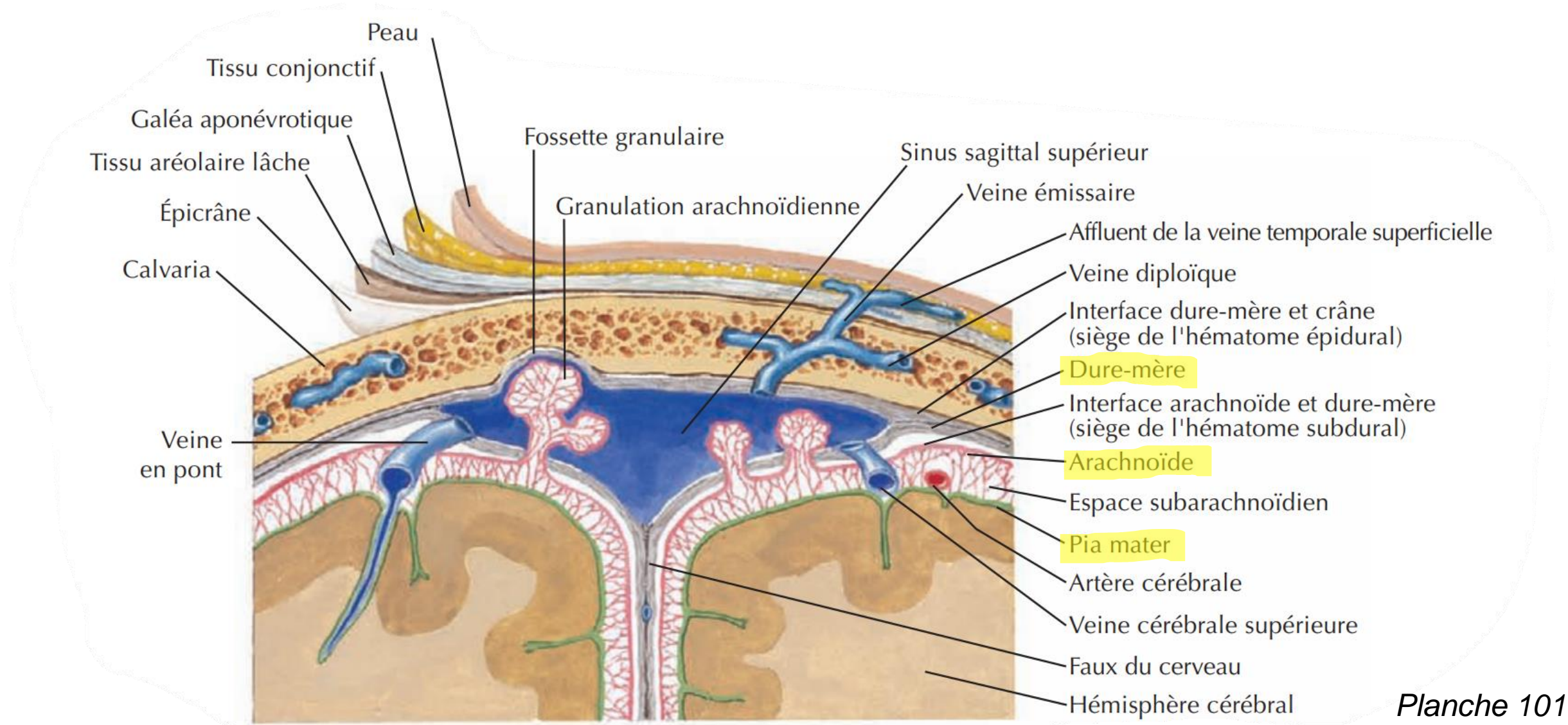
**4**  
MIELOMENINGOCELE

*Non fermeture neuropore post = spina bifida*

# Méninge crânienne



# Méninge crânienne

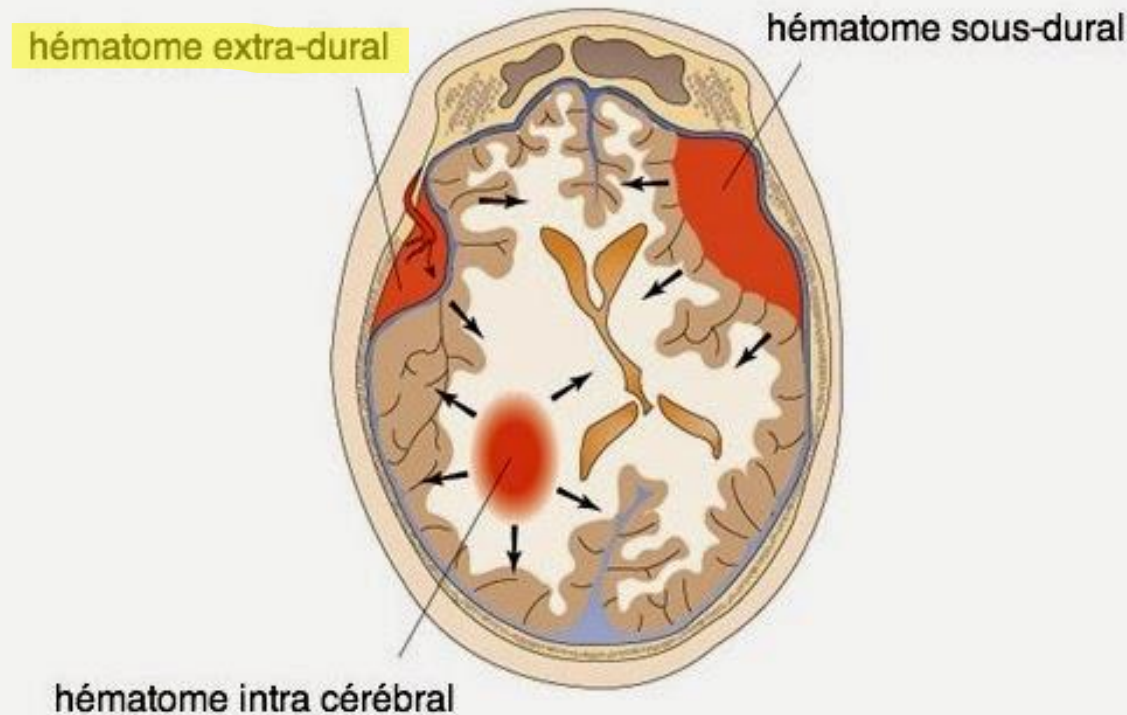






# Applications Patho

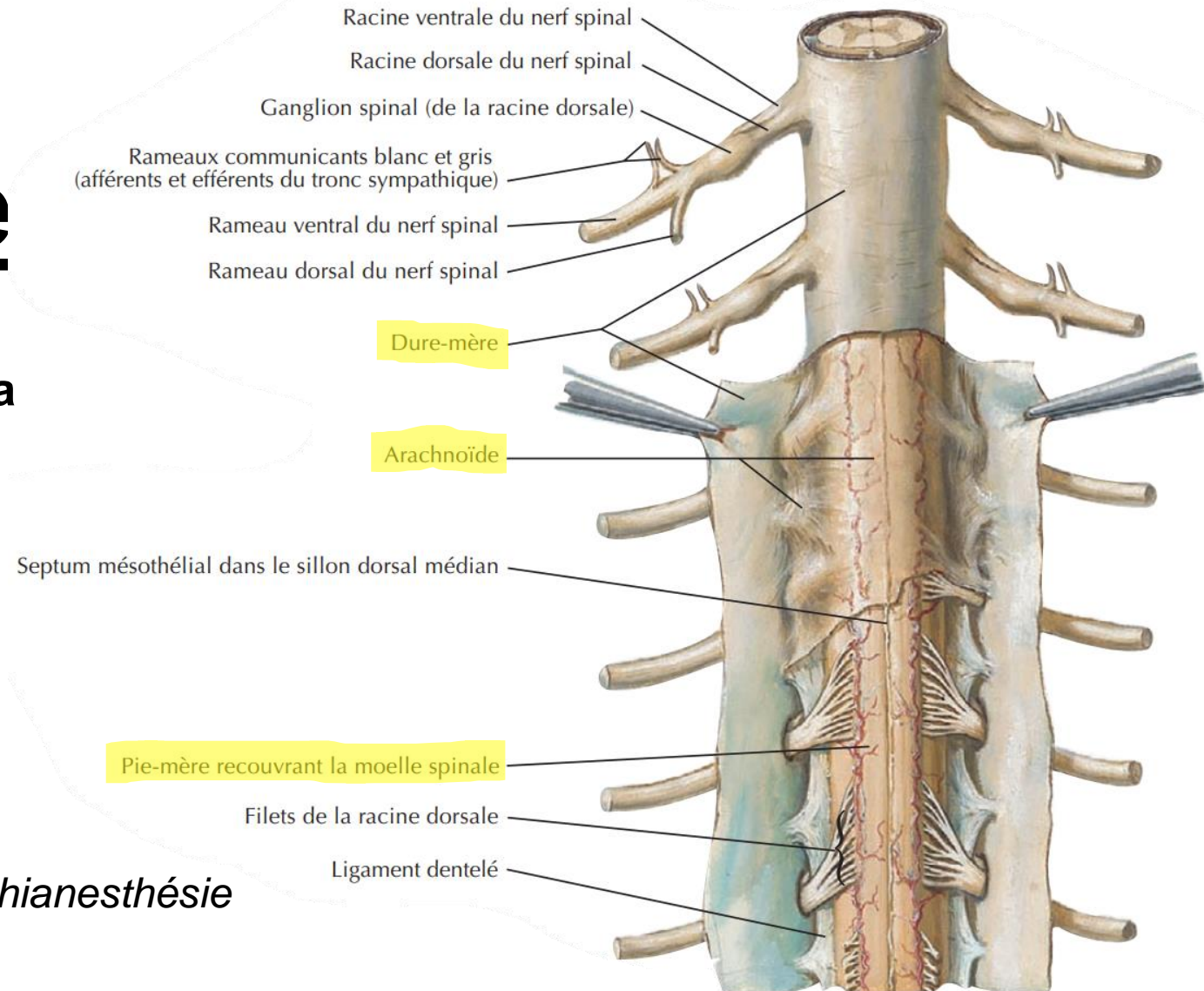
Espace décollable de Gérard Marchand : point de faiblesse, siège des **hématomes extra-duraux**



# Méninge spinale

- Dure-mère enveloppe les nerfs **jusqu'à la sortie du FIV** → adhérence du nerf à l'os
- Corps Adipeux Rachidien → **mobilité**

*Anesthésie dans dure-mère (intradurale) = rachianesthésie*  
*Anesthésie dans graisse = péridurale*





# Cavités du SNC

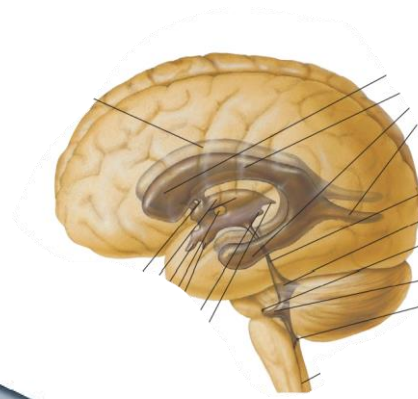


Planche 107

Ventricules Lat

3<sup>e</sup> Ventricule

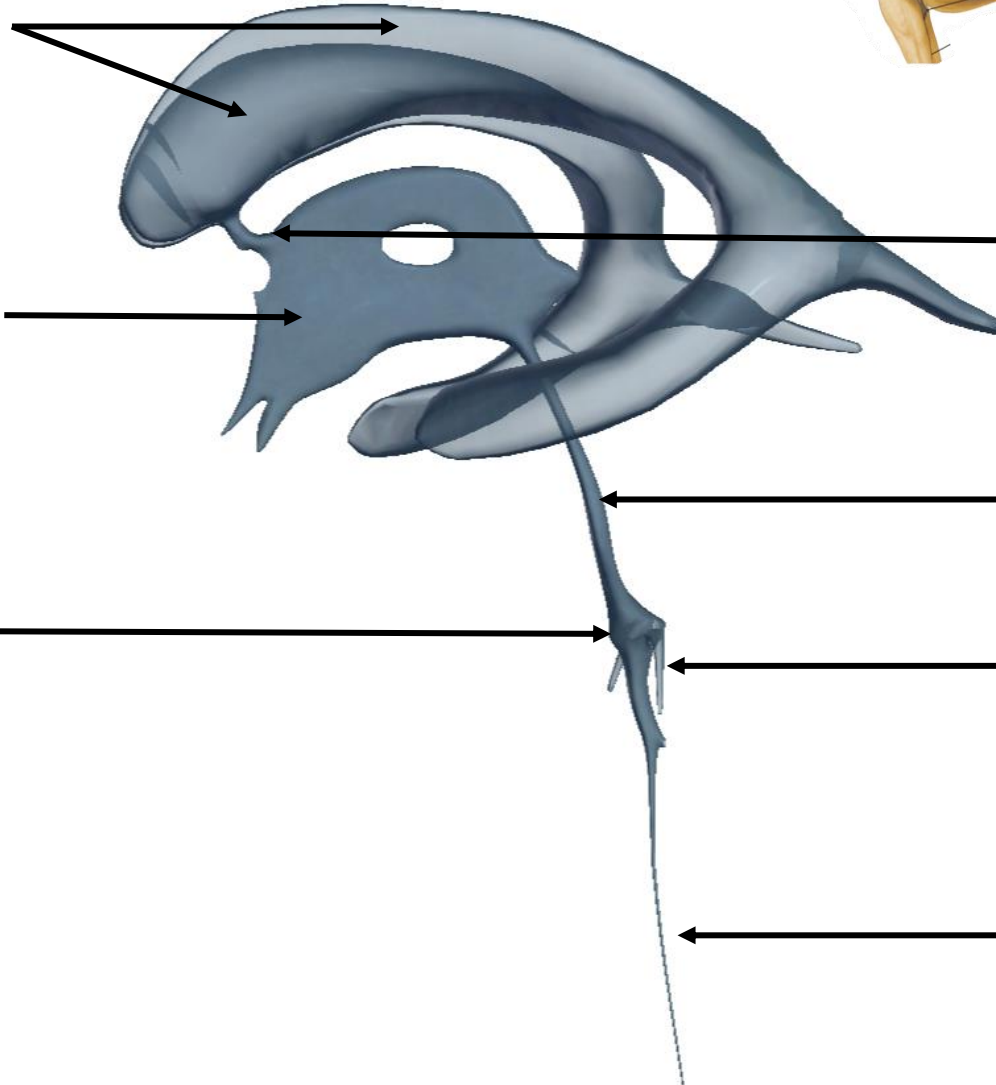
4<sup>e</sup> Ventricule

Foramen interV

Aqueduc du MésE

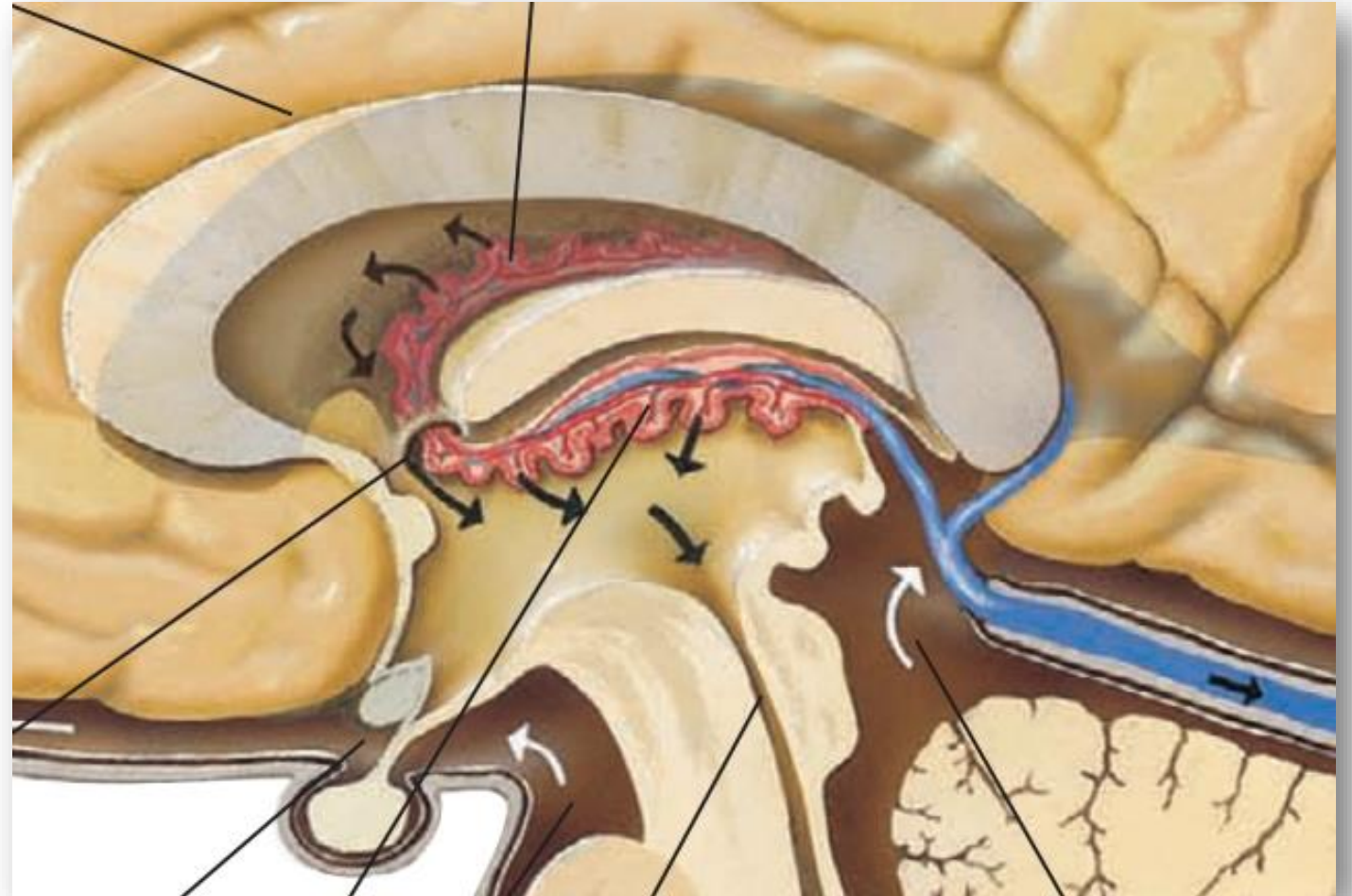
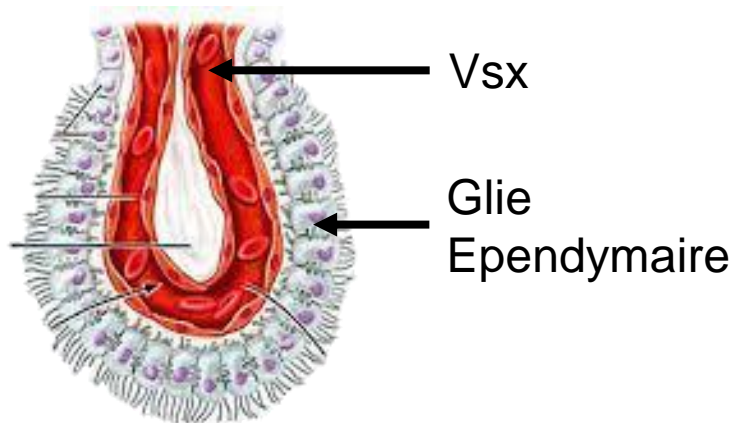
Orifice Mdn V4

Canal central de la moelle  
(épendymaire)



# Liquide Céphalo Rachidien

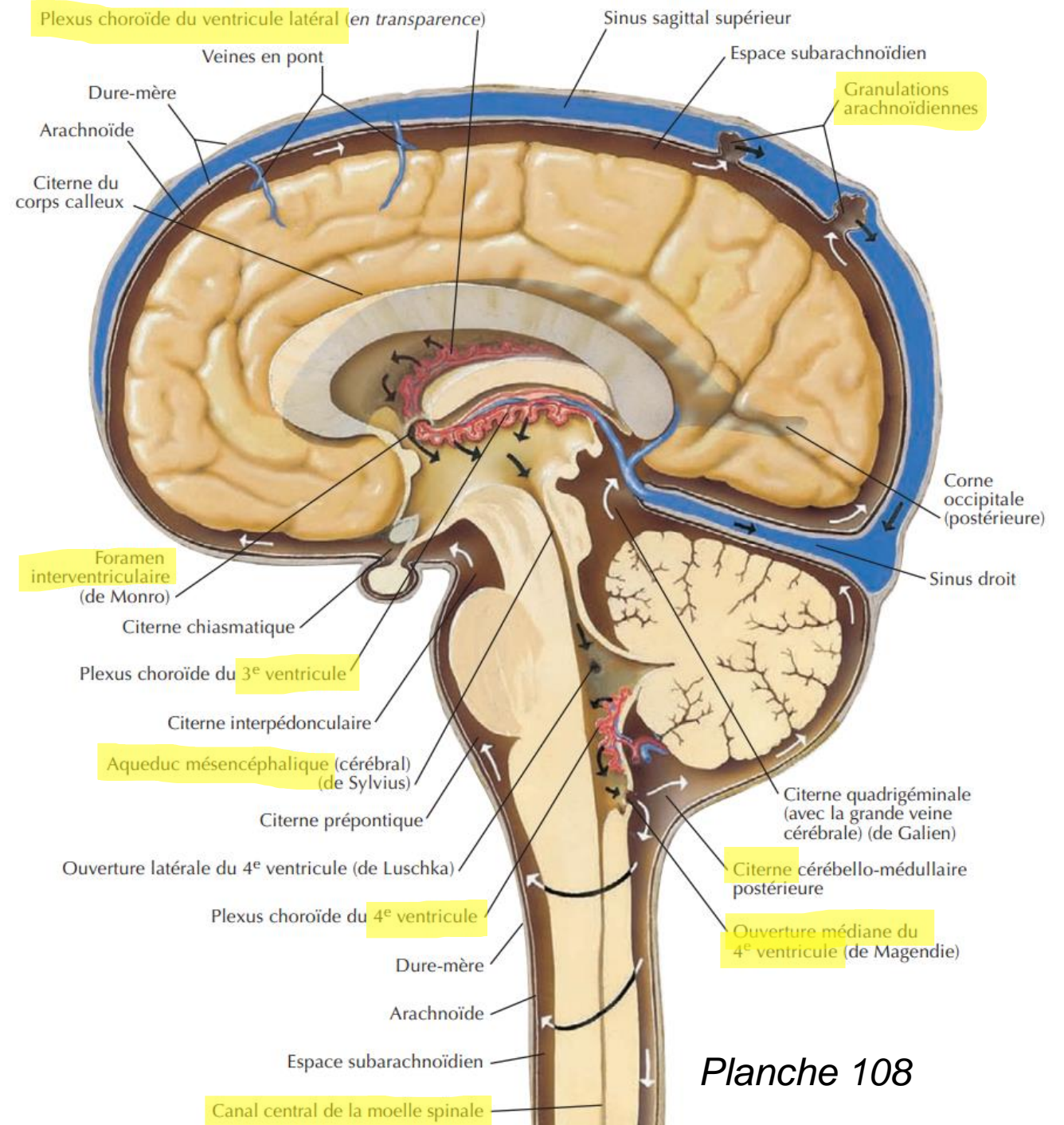
- Produit par **Plexus Choroides = Toile Choroidienne** (accolement pieM + épendyme) + **Veines Plexiformes**
- Baigne tout le SNC



*Planche 108*

# Trajet LCR

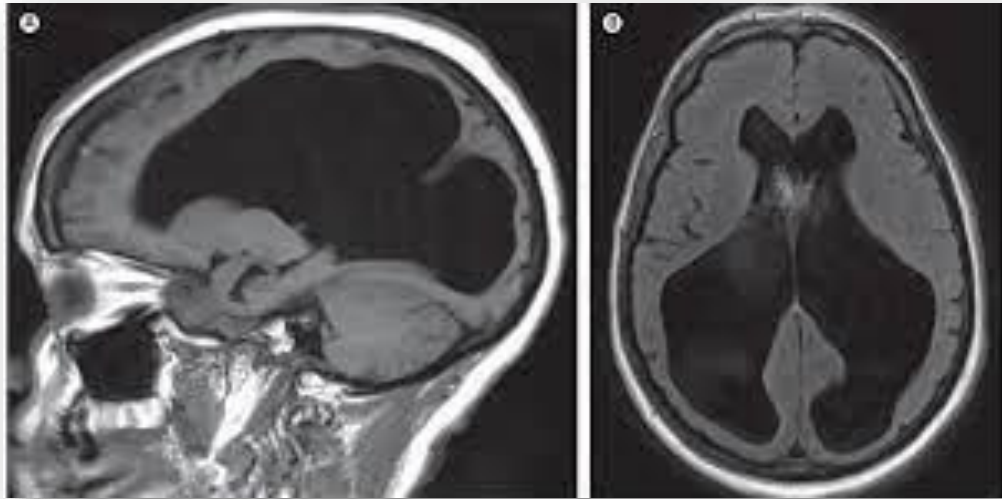
VL – For InterV – V3 – Acqueduc MesE –  
V4 – For Mdn V4 – Espace Subarachn –  
Granulations Arachn







# Applications Patho

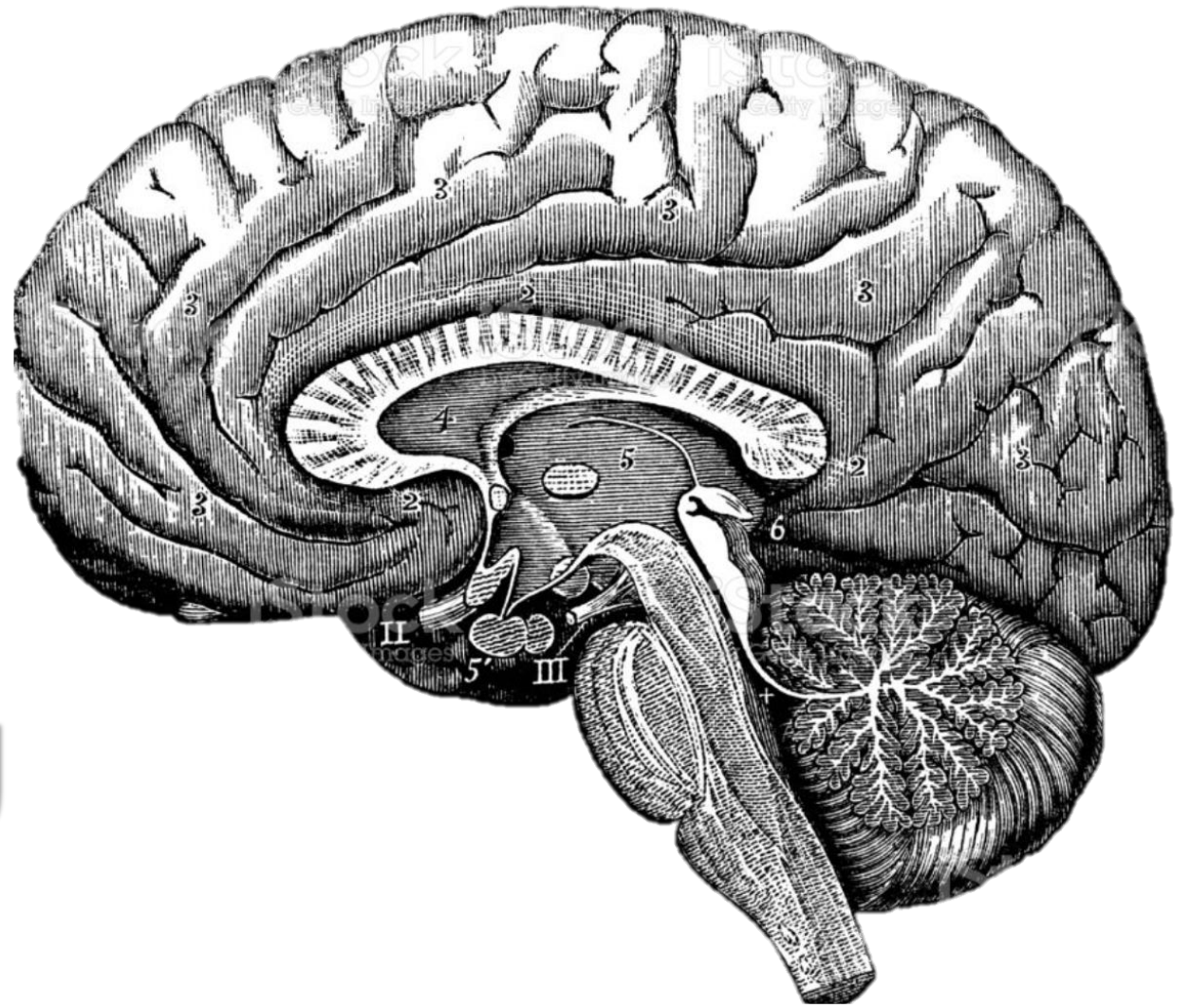


*Hydrocéphalie*



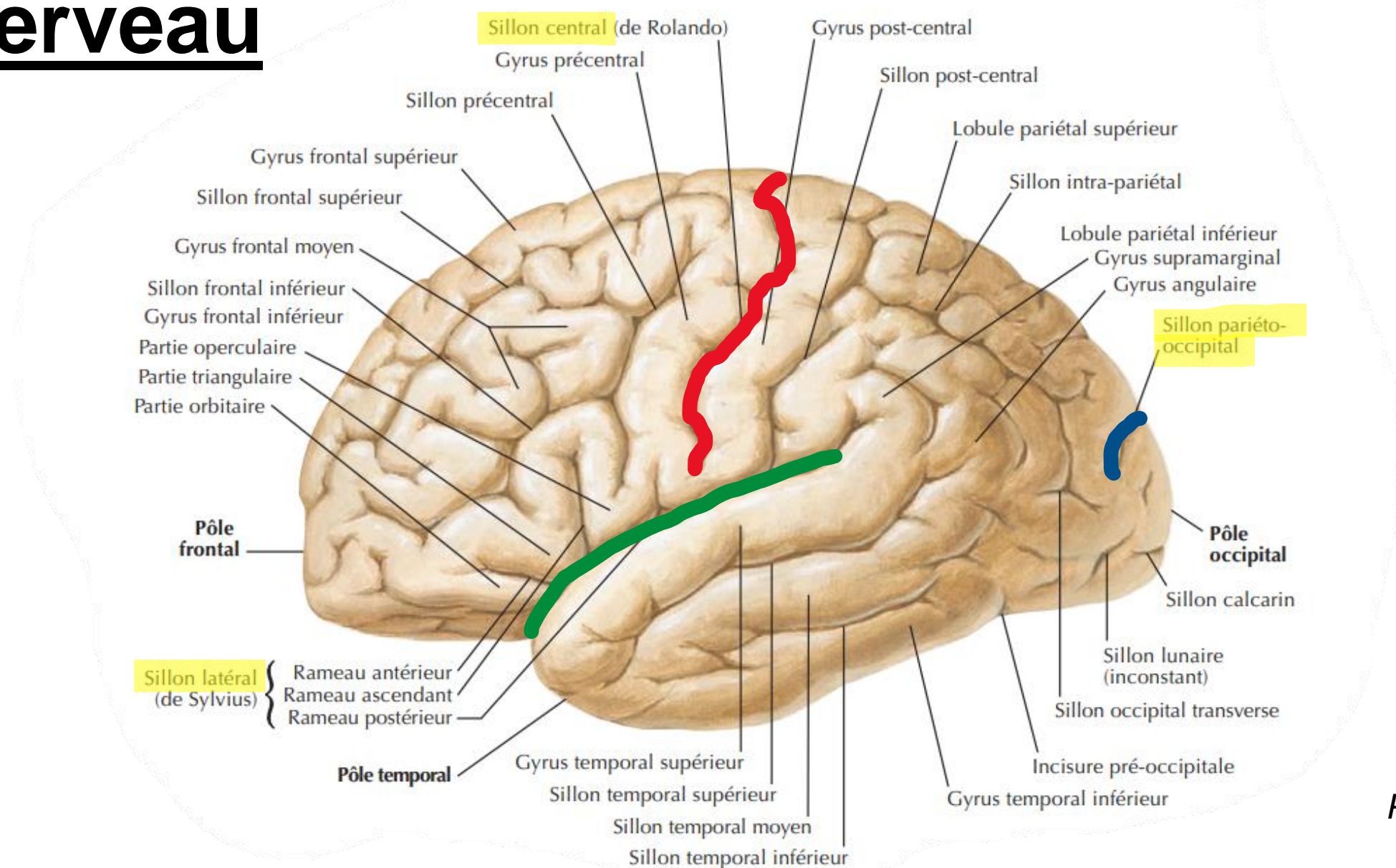
*Syringomyélie*

# LE CERVEAU

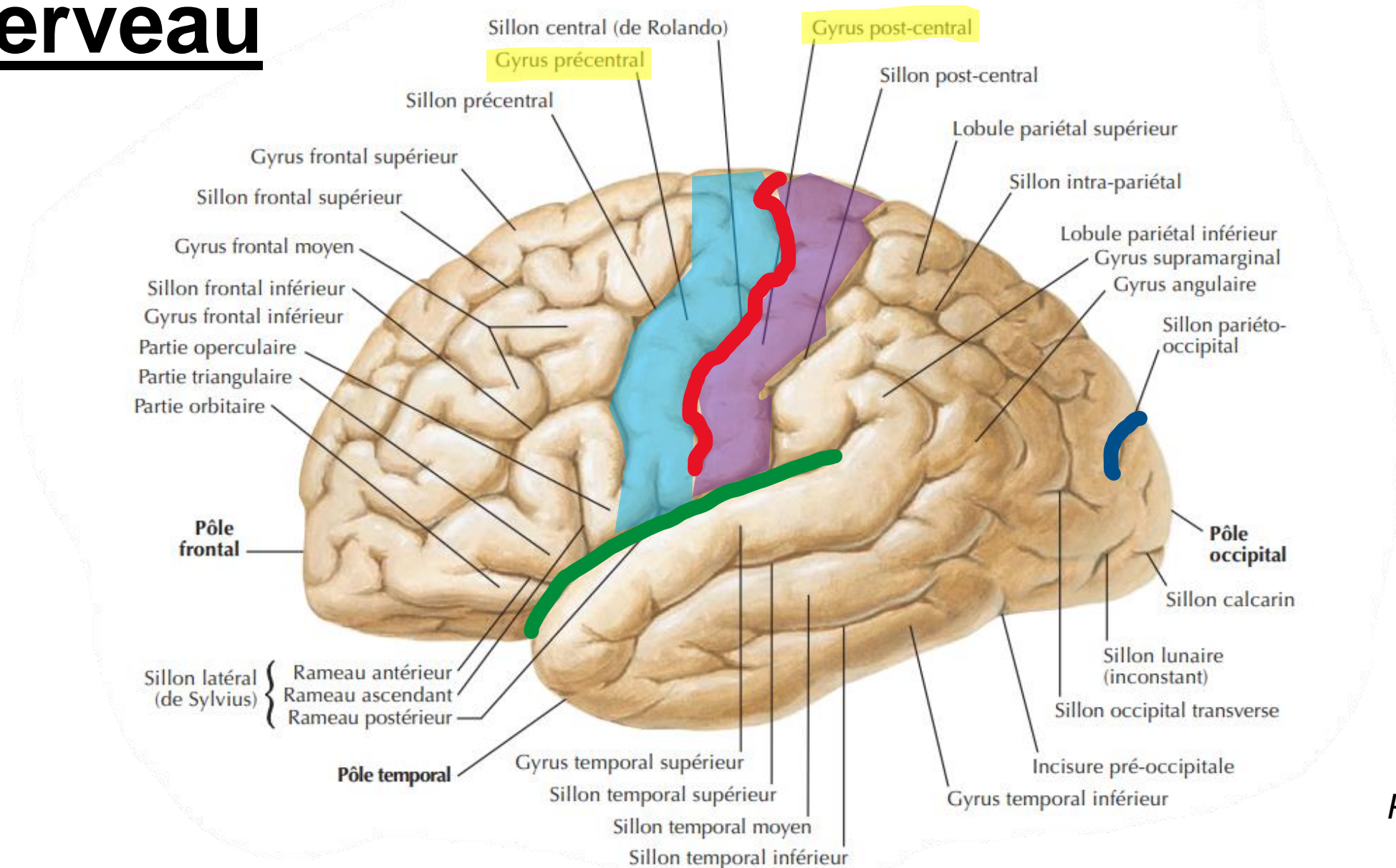




# Cerveau

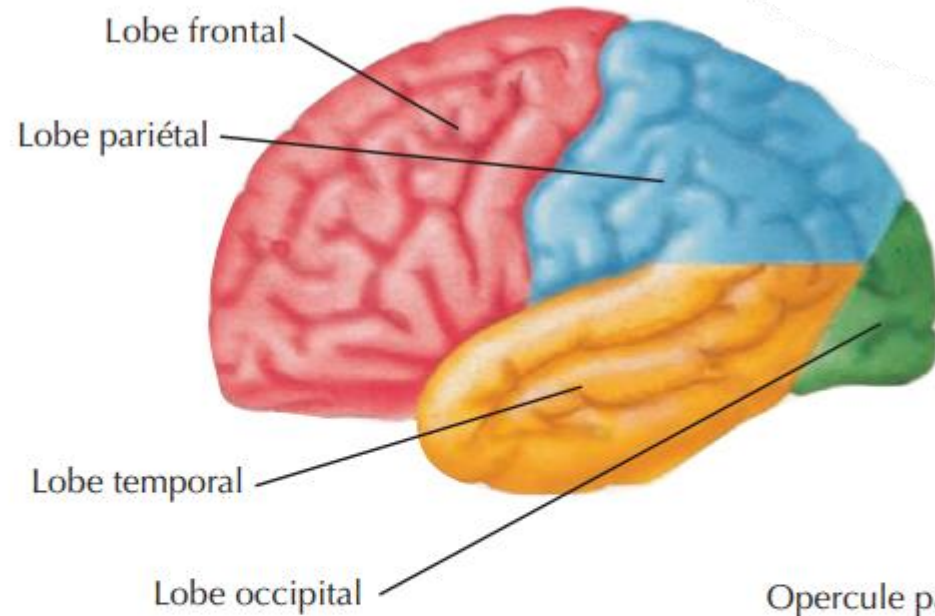


# Cerveau

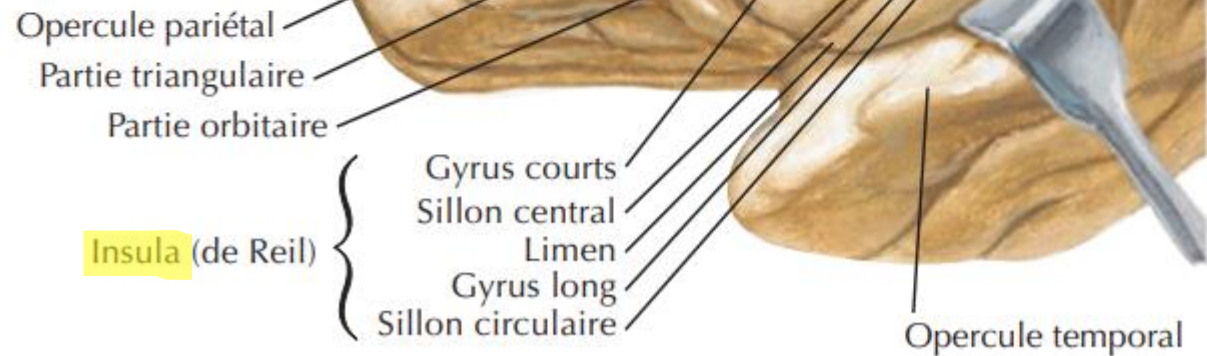




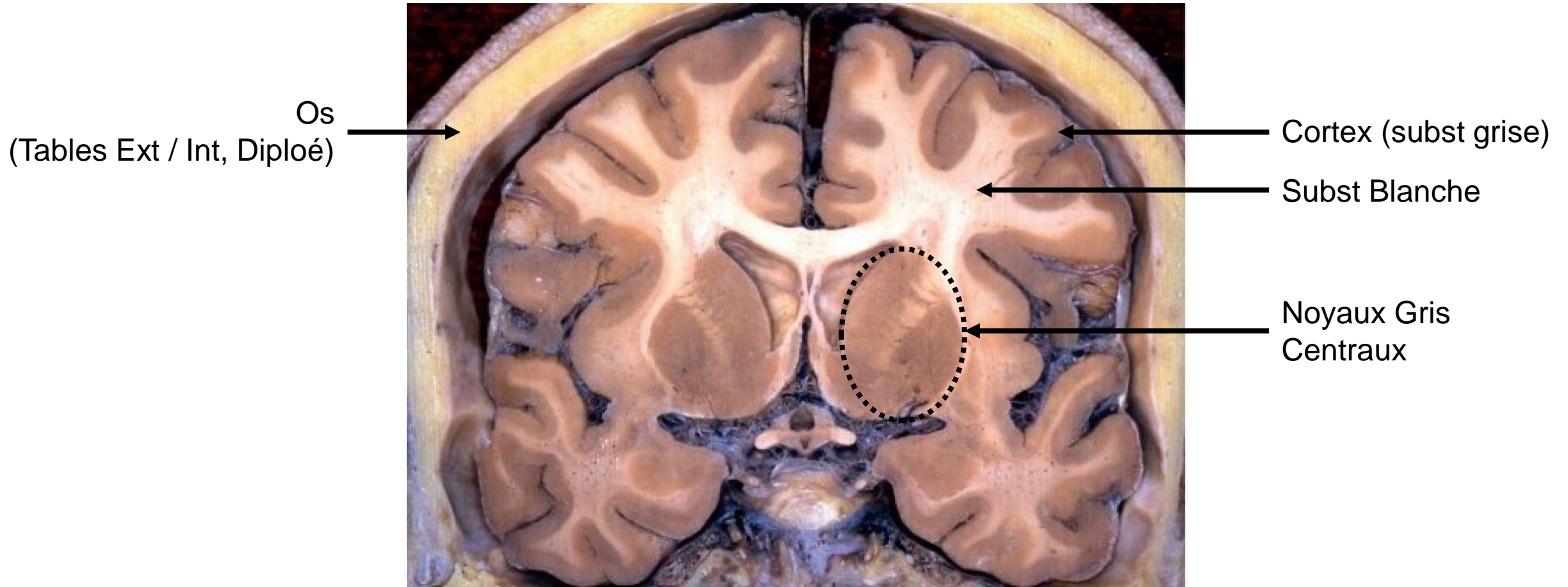
# Cerveau



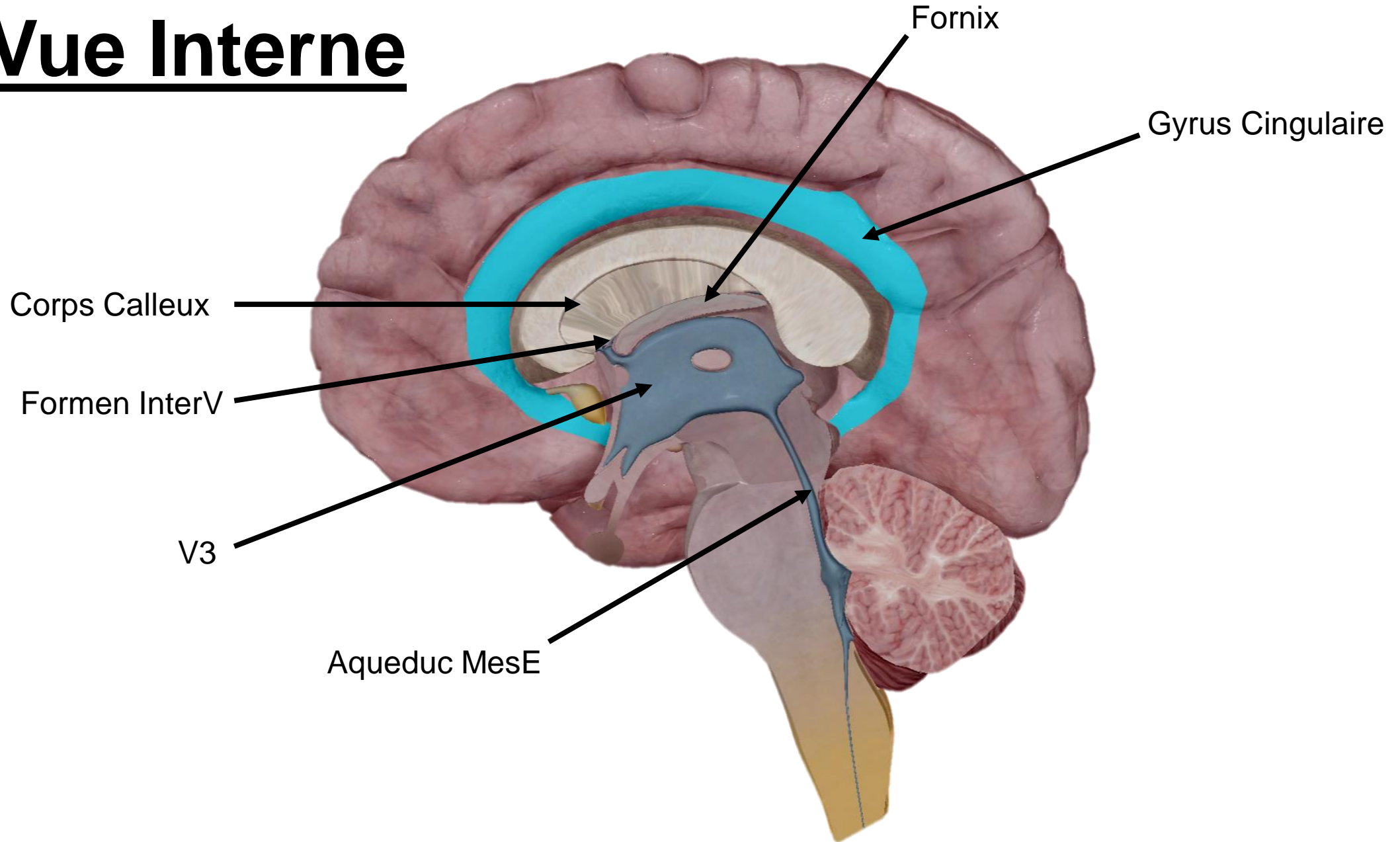
*F. Netter  
M.D.*



# Cerveau en coupe frontale



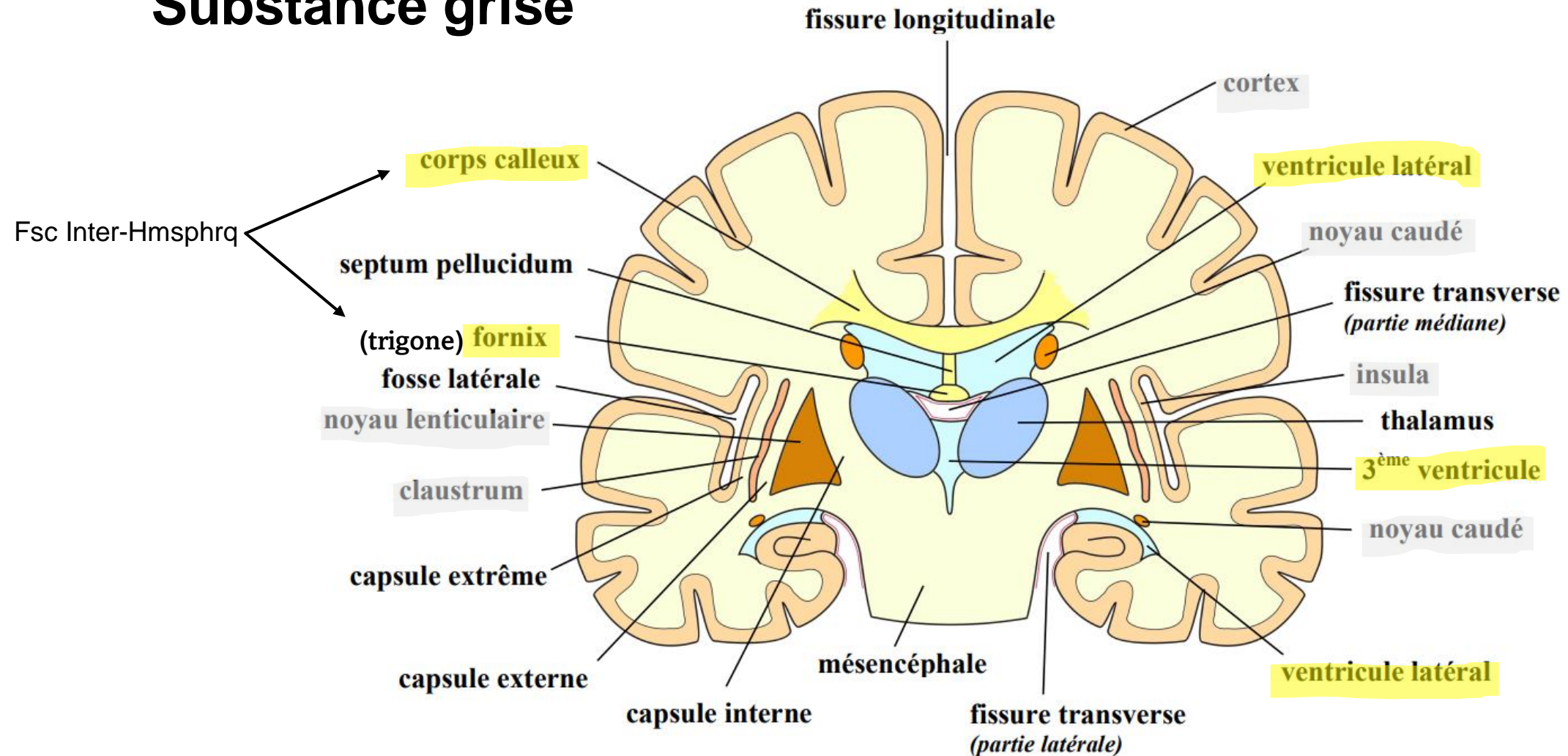
# Vue Interne





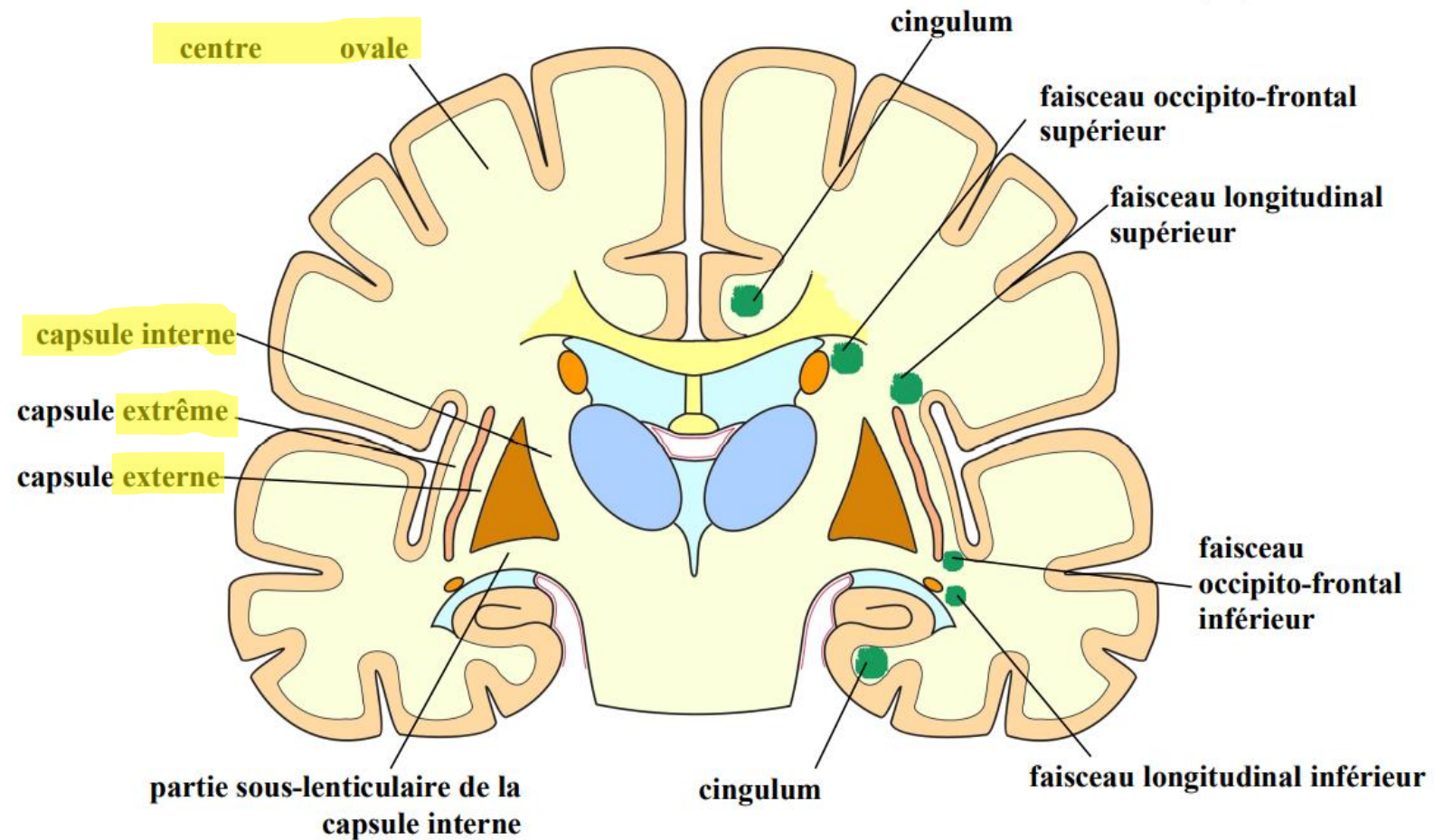
# Coupe frontale (de Charcot)

## Substance grise

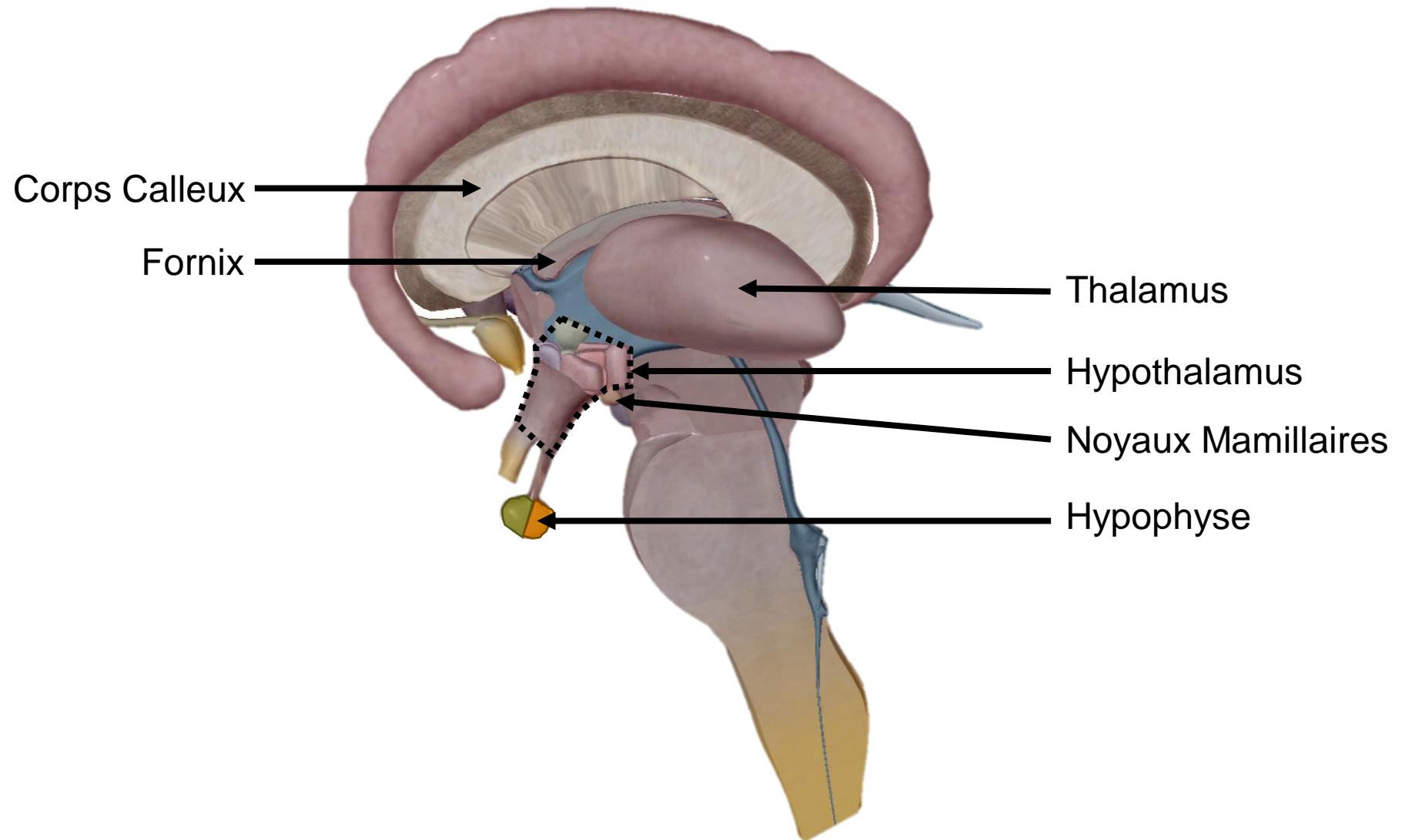


# Coupe frontale (de Charcot)

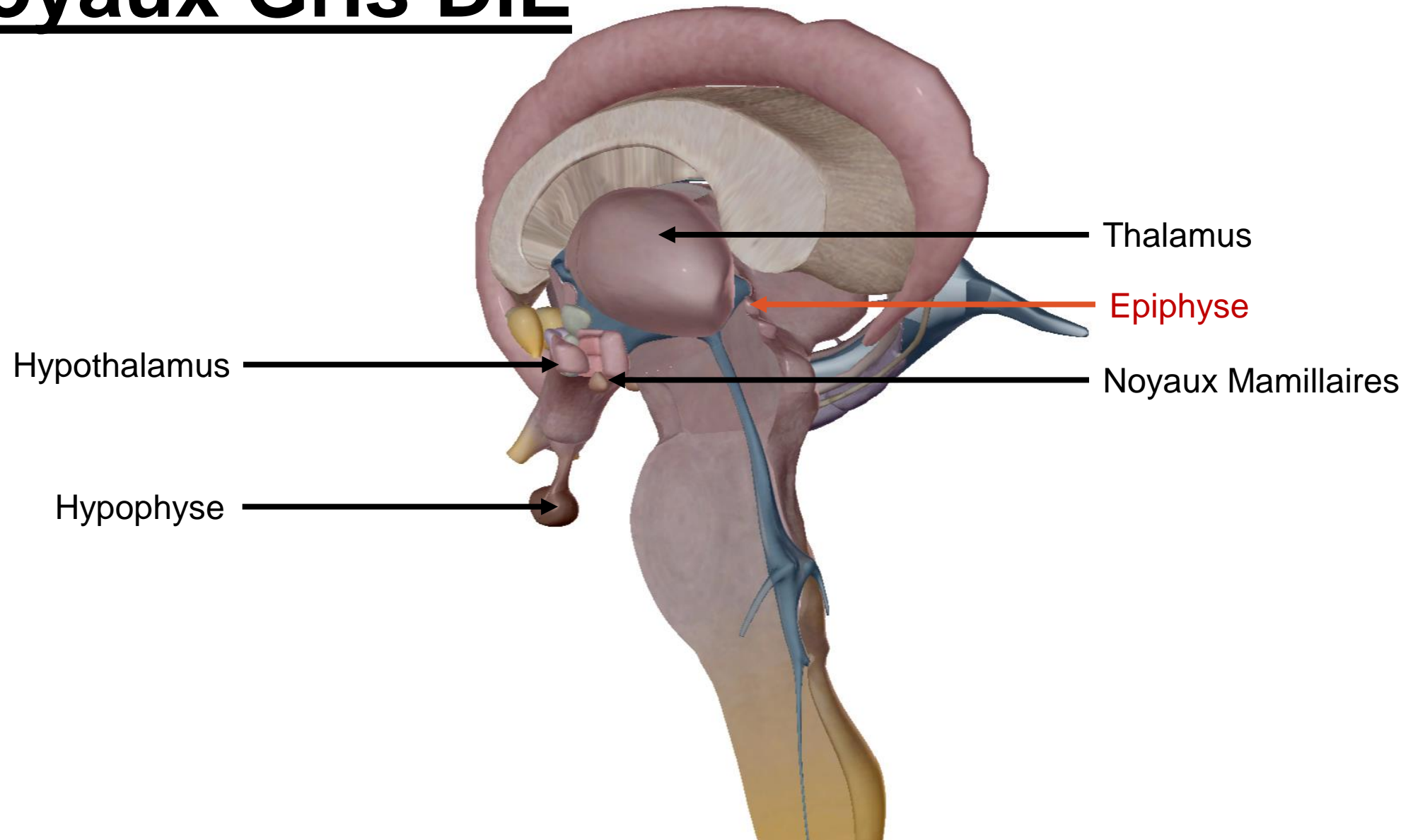
## Substance blanche



# Noyaux Gris DiE

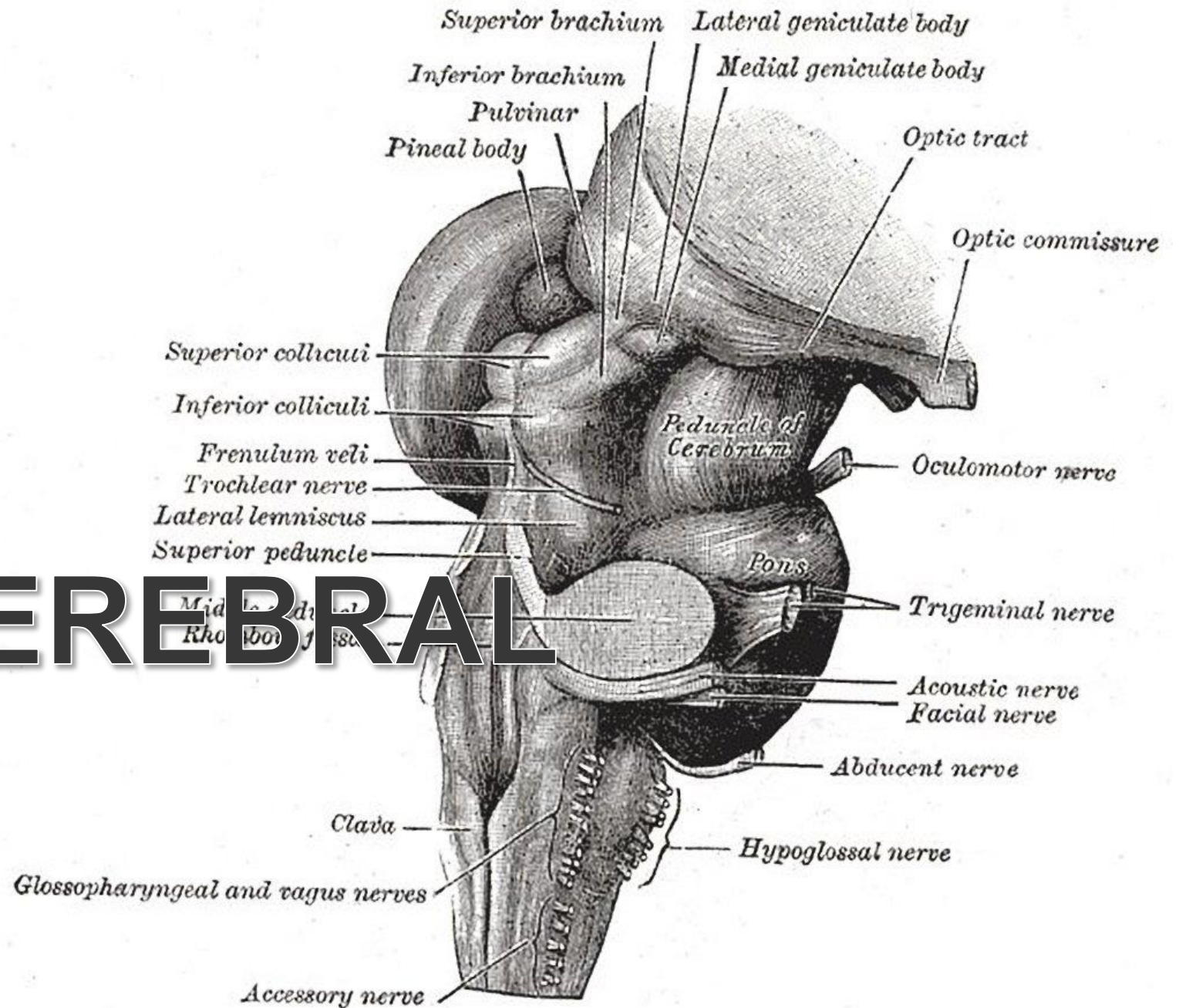


# Noyaux Gris DiE





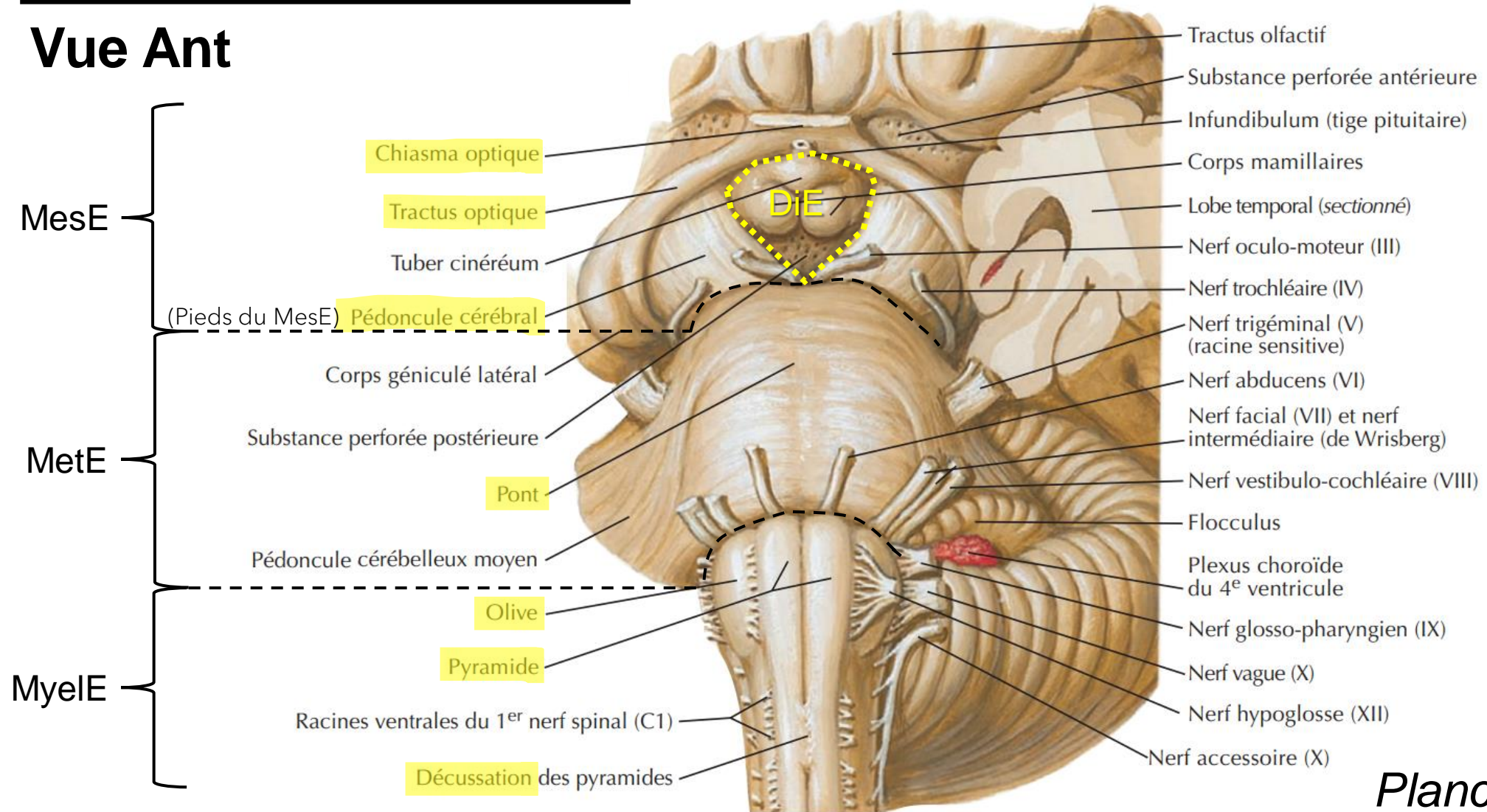
# TRONC CEREBRAL





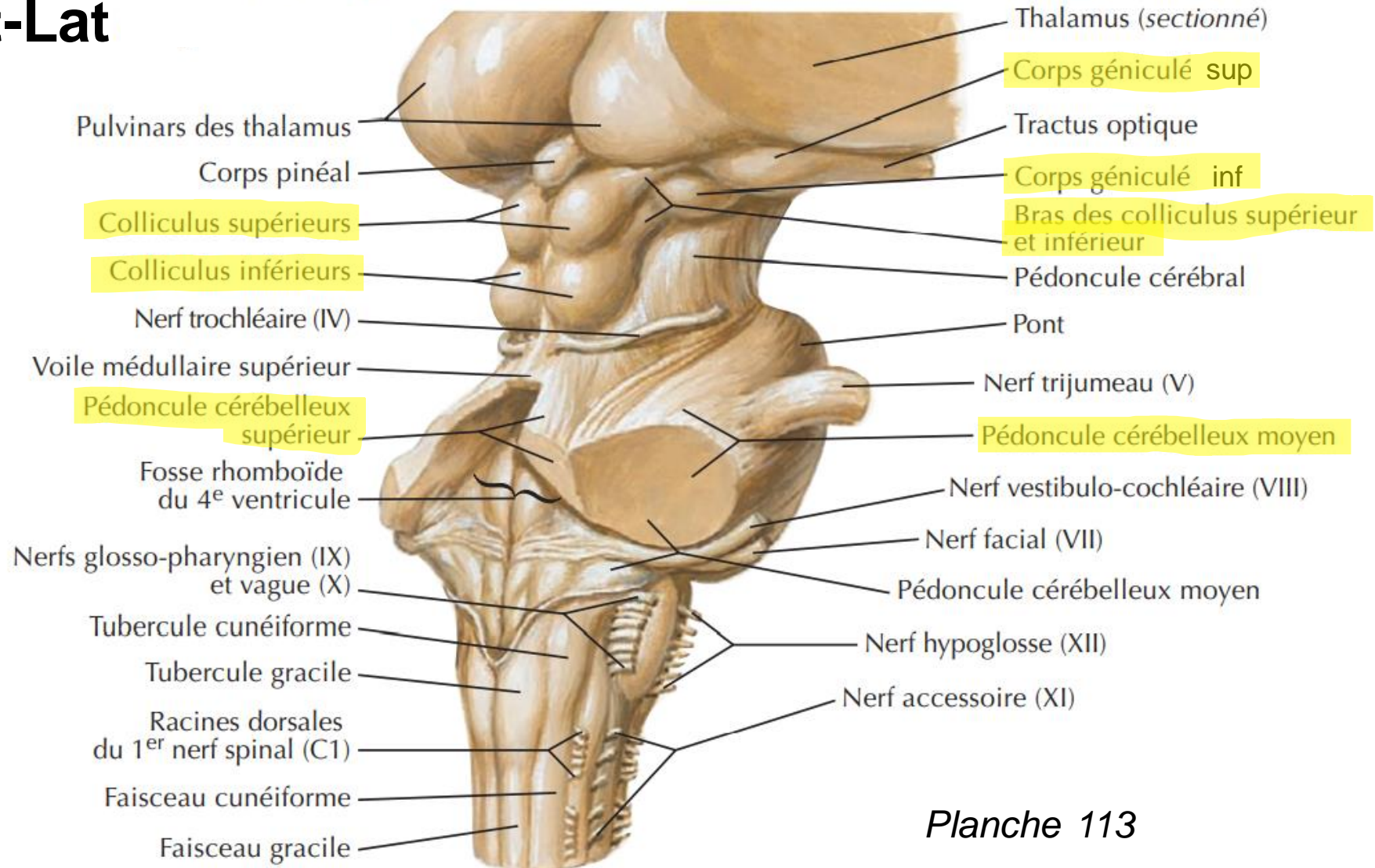
# Tronc Cérébral

## Vue Ant



# Tronc Cérébral

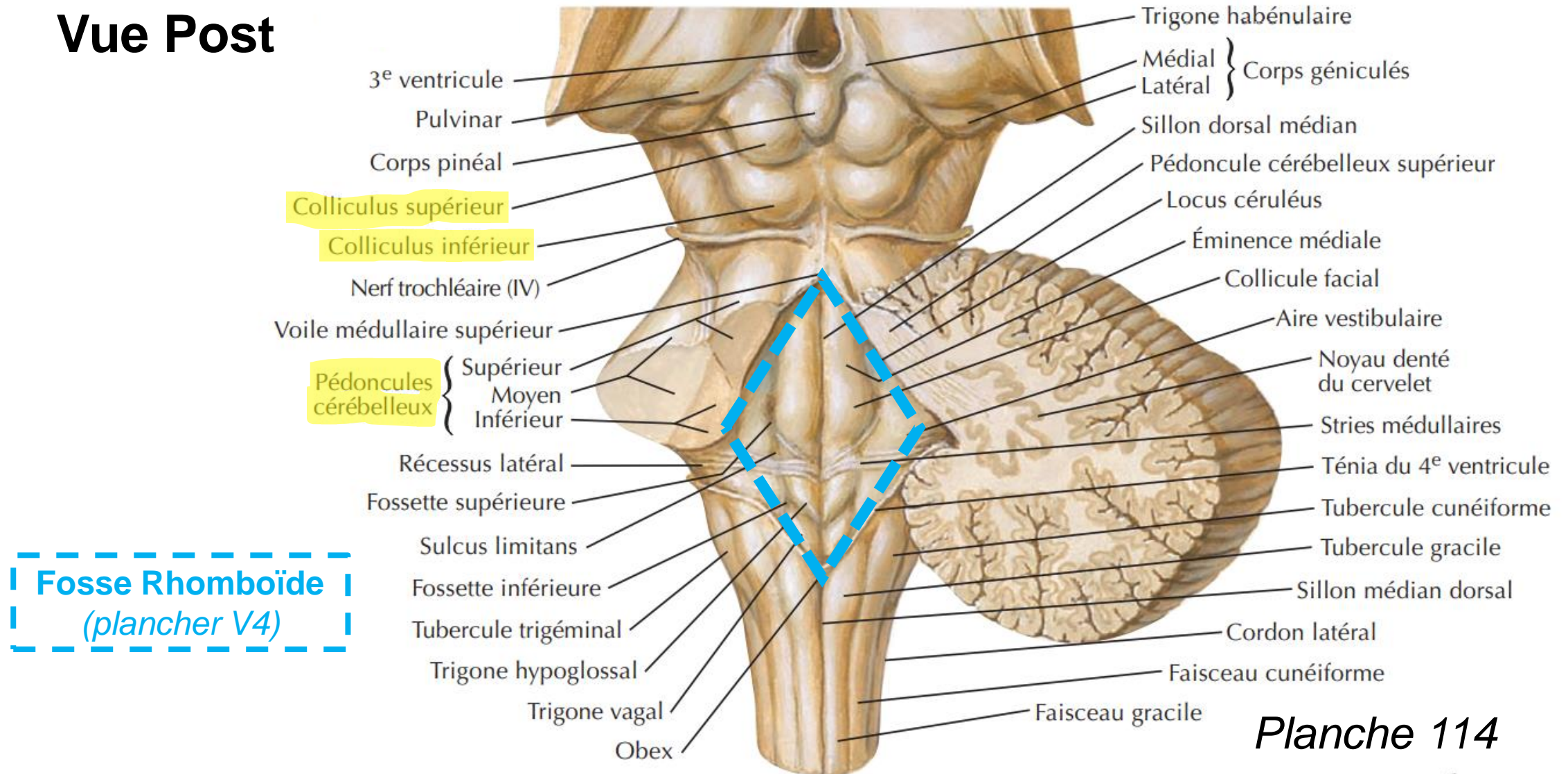
## Vue Post-Lat



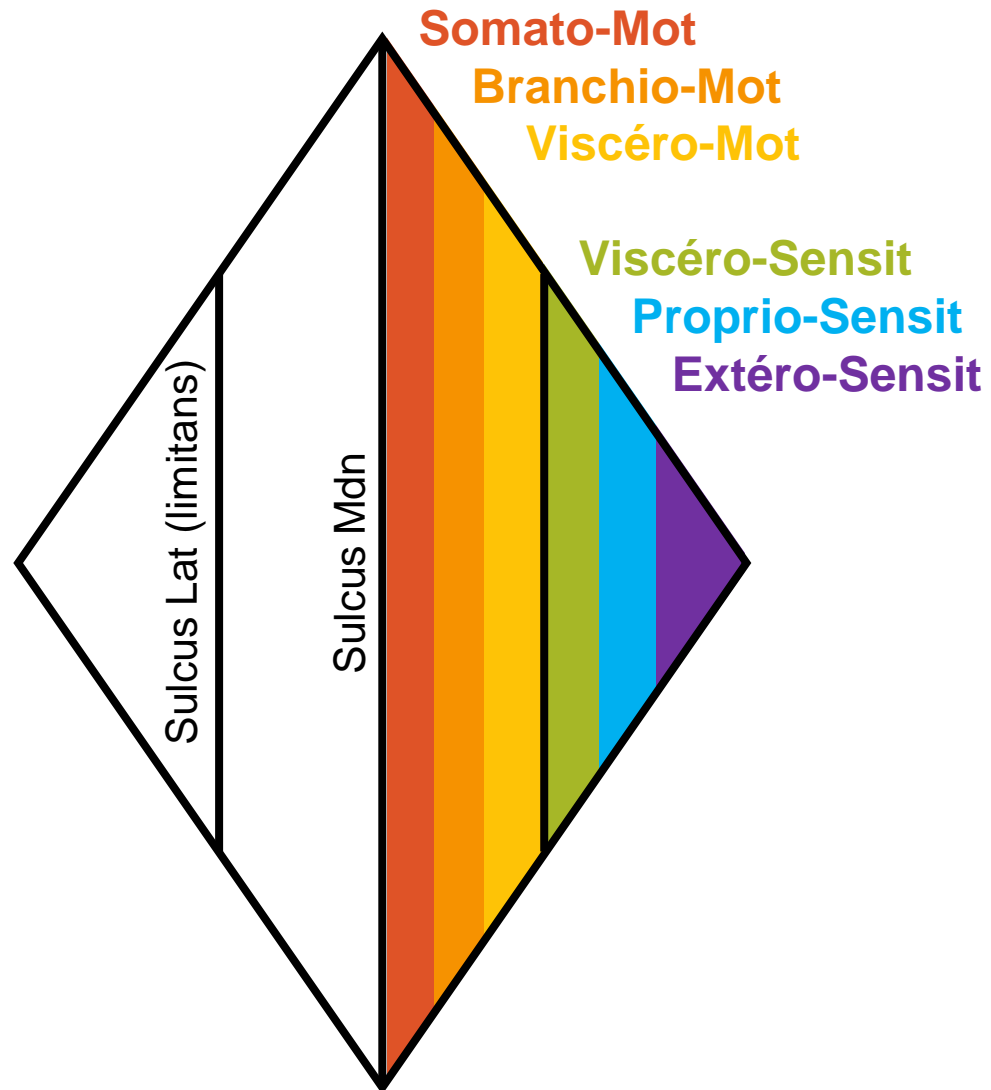


# Tronc Cérébral

## Vue Post

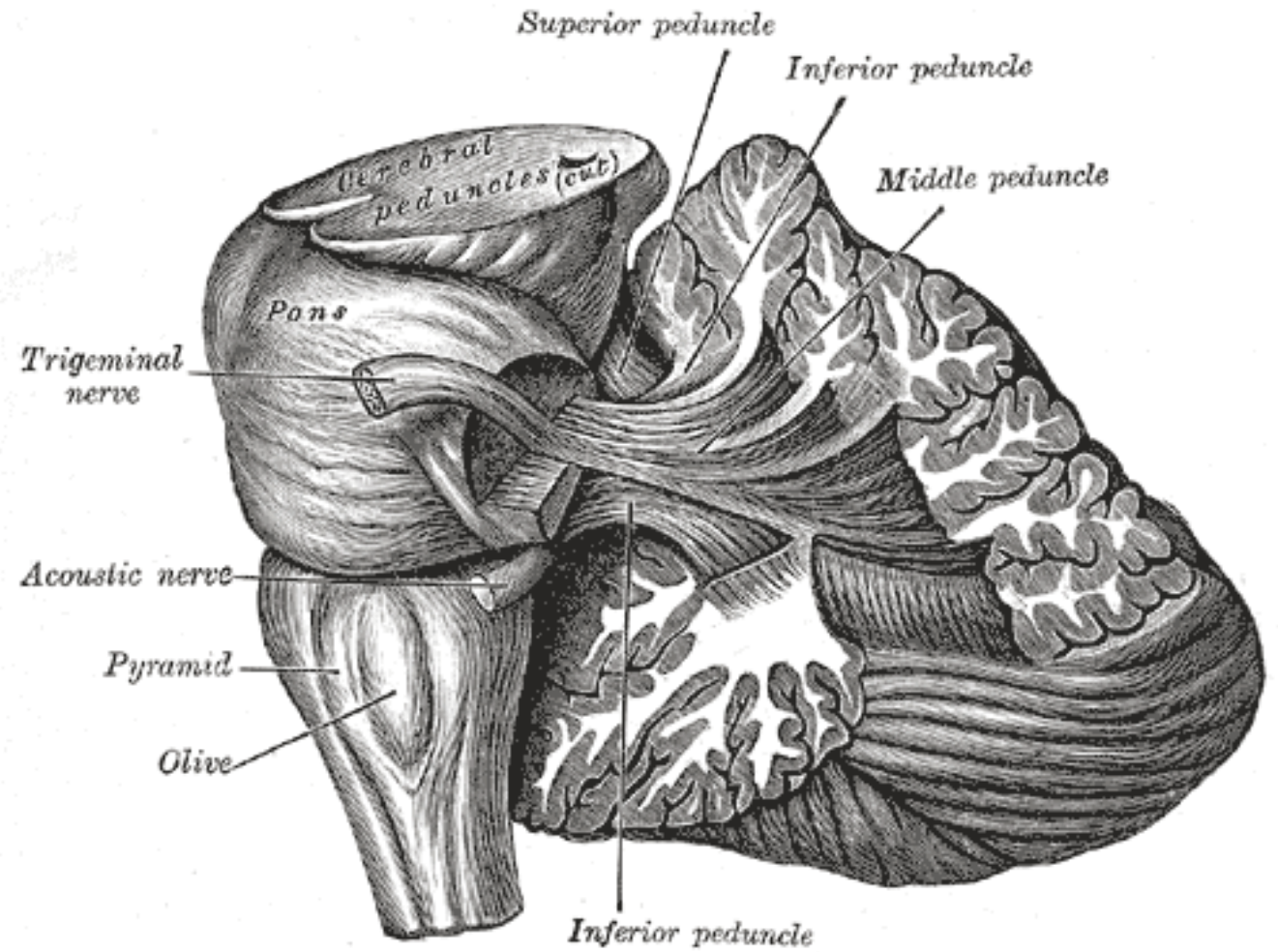


# Plancher V4

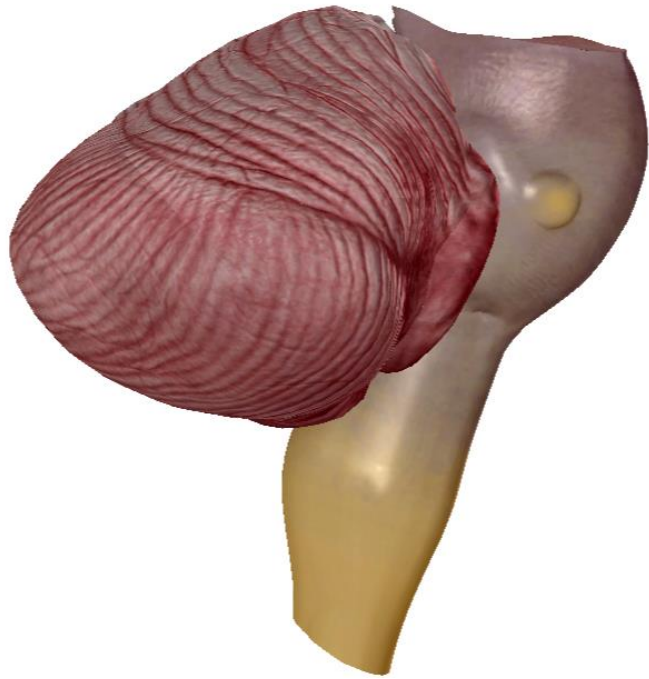




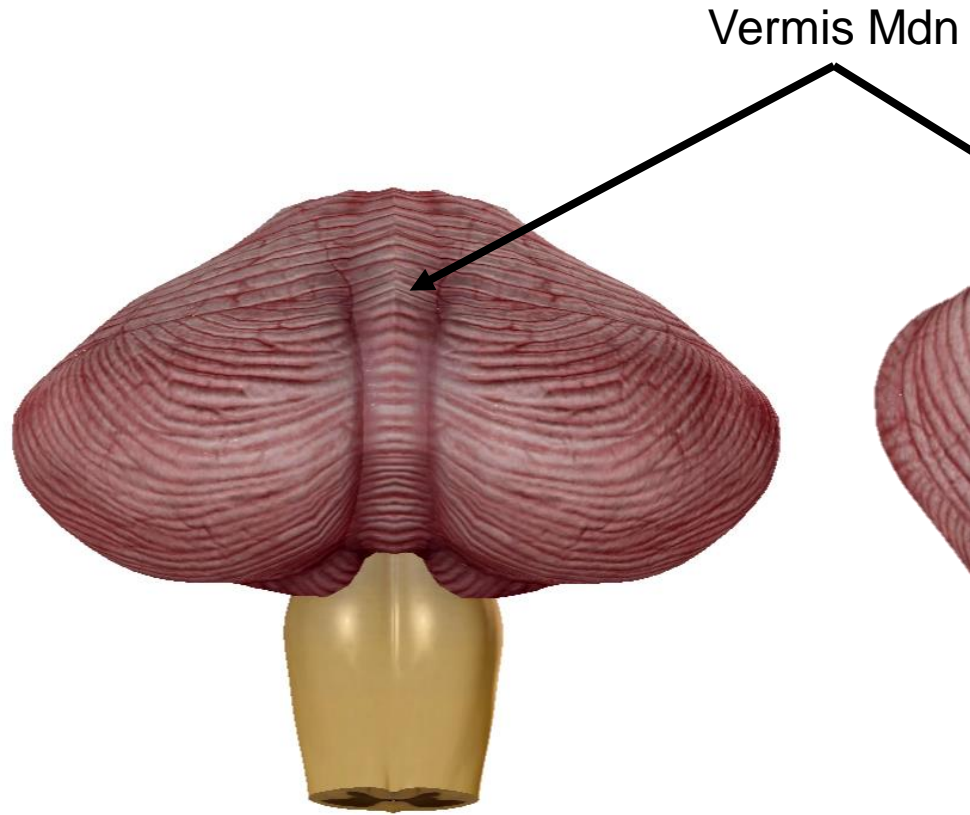
# CERVELET



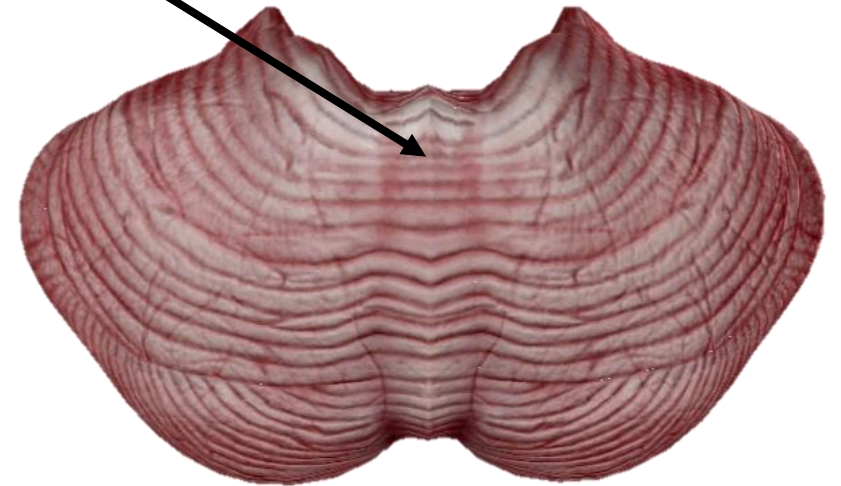
# Cervelet



*Vue Lat*



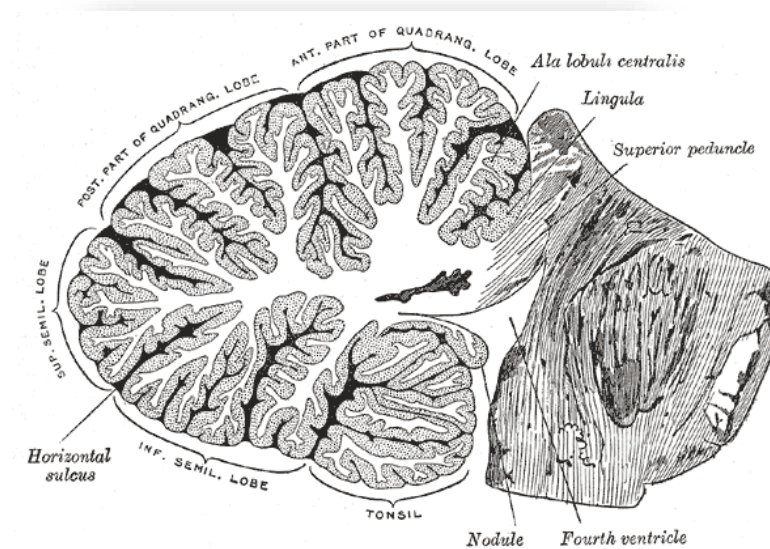
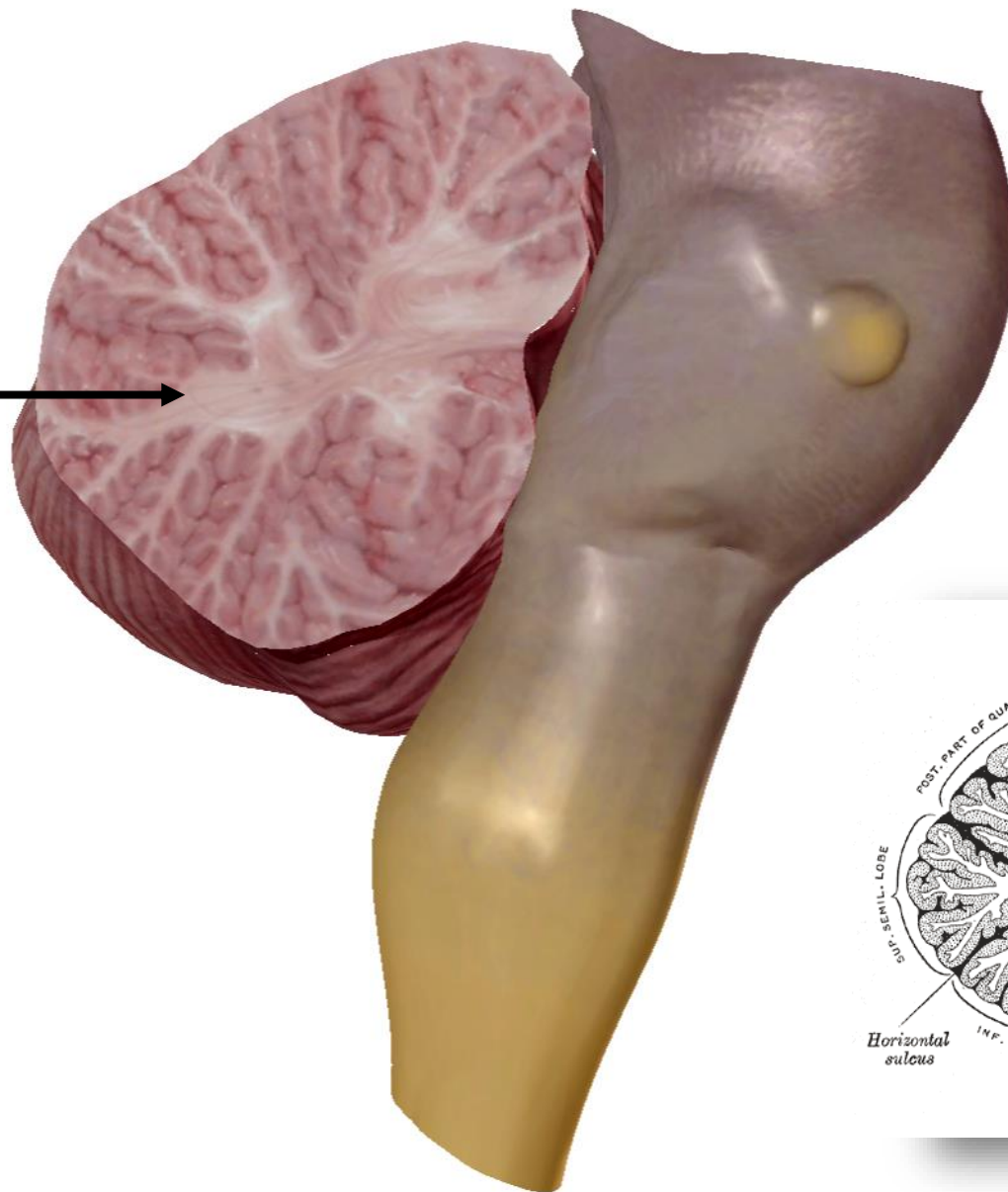
*Vue Post*



*Vue Sup*

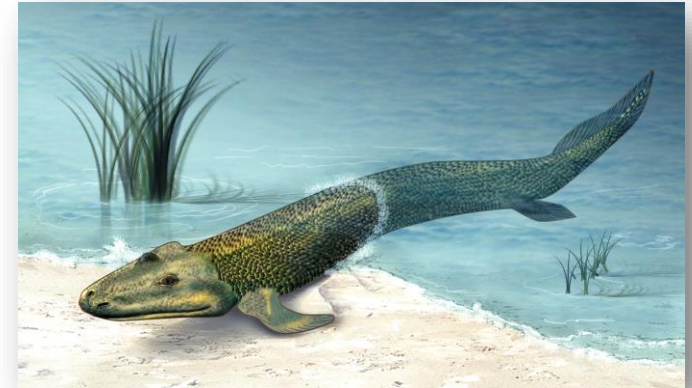
# Cervelet

Arbre de vie





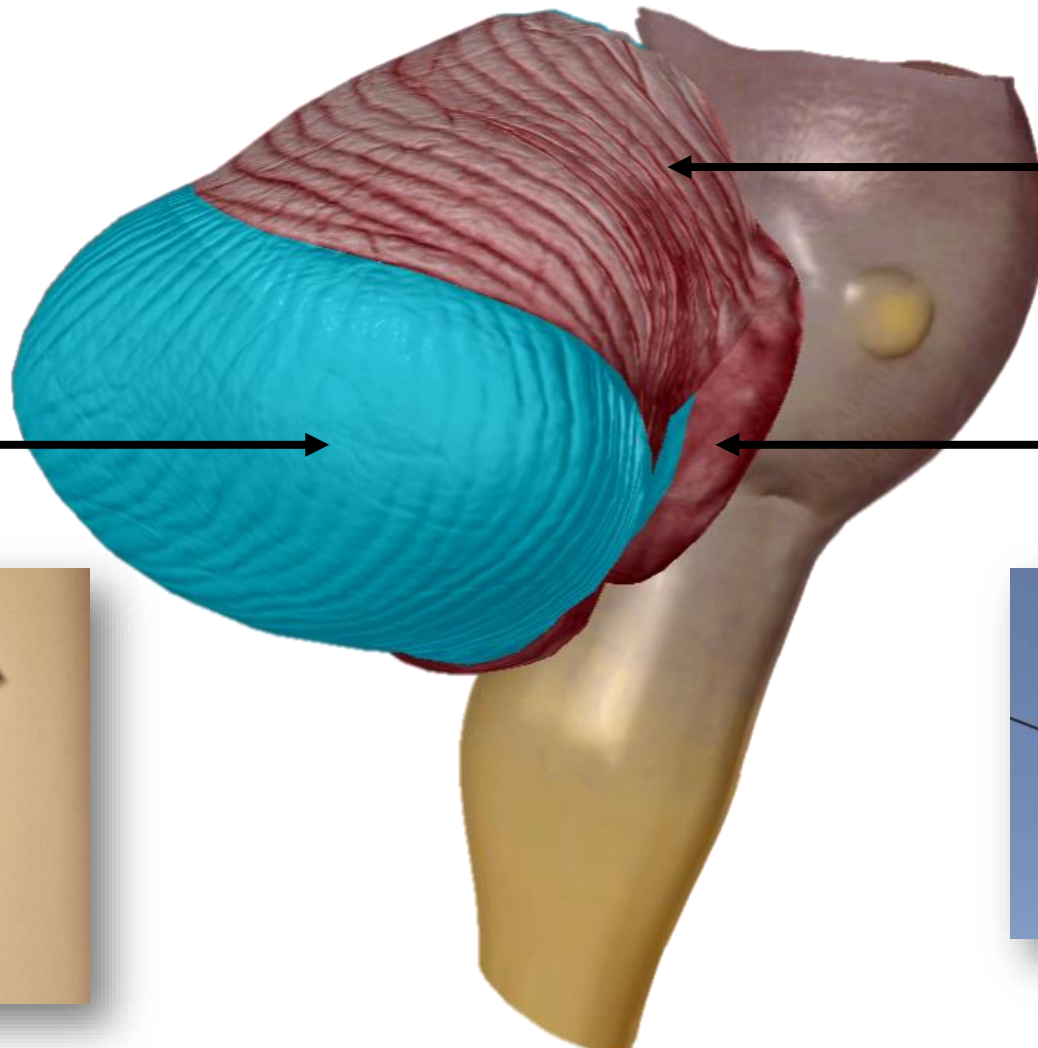
# Cervelet



Spino-cérébellum

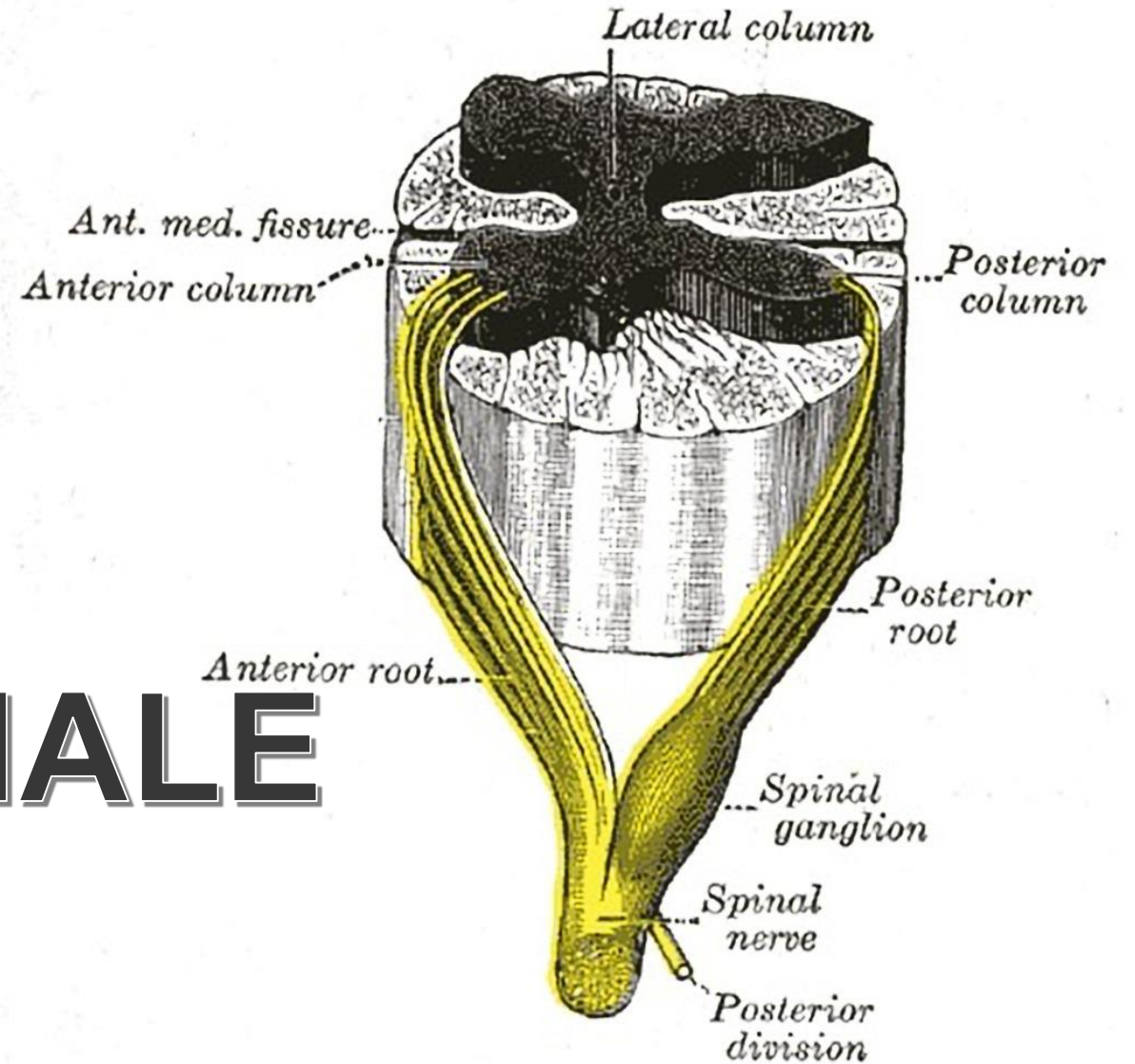
Cortico-cérébellum

Vestibulo-cérébellum

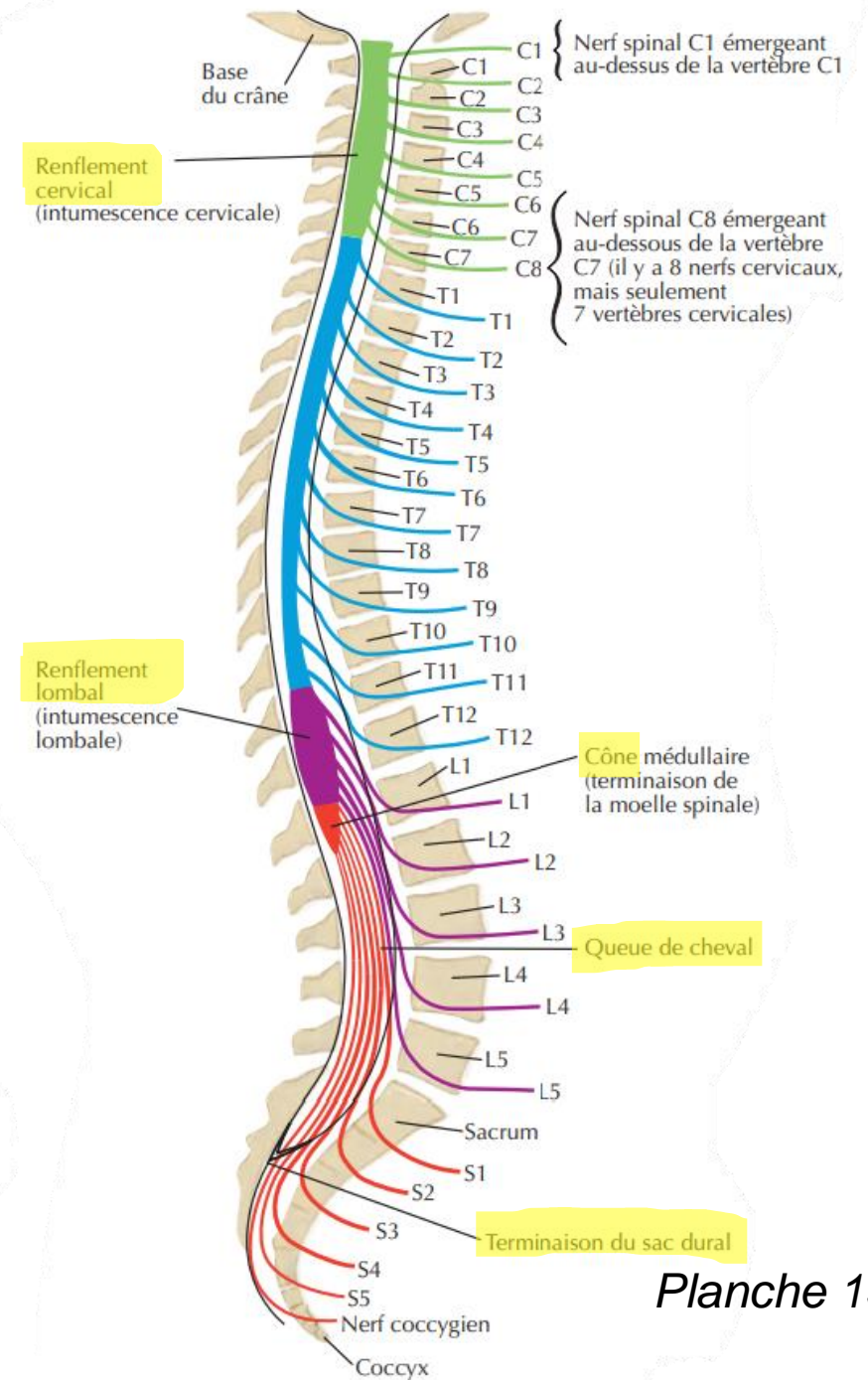
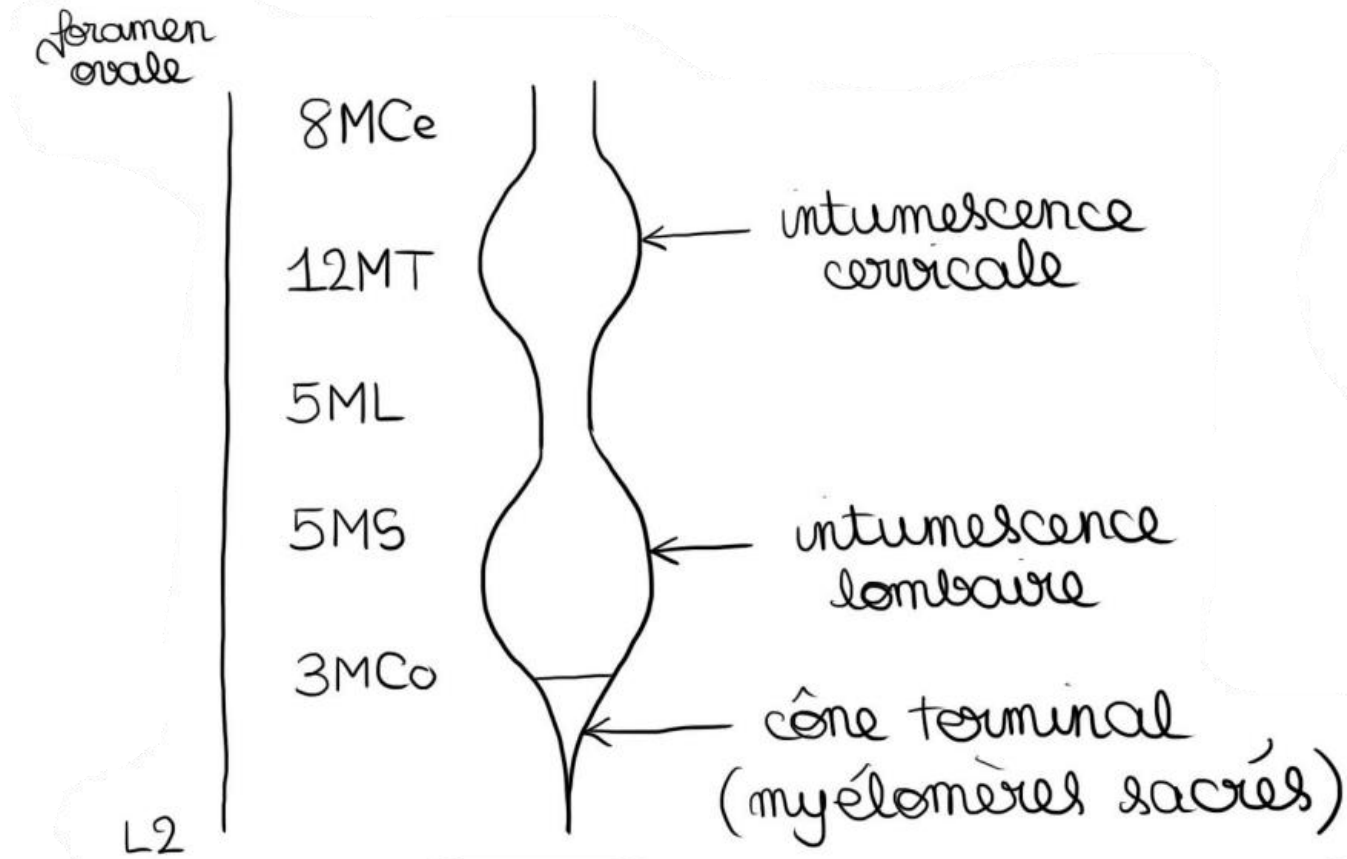




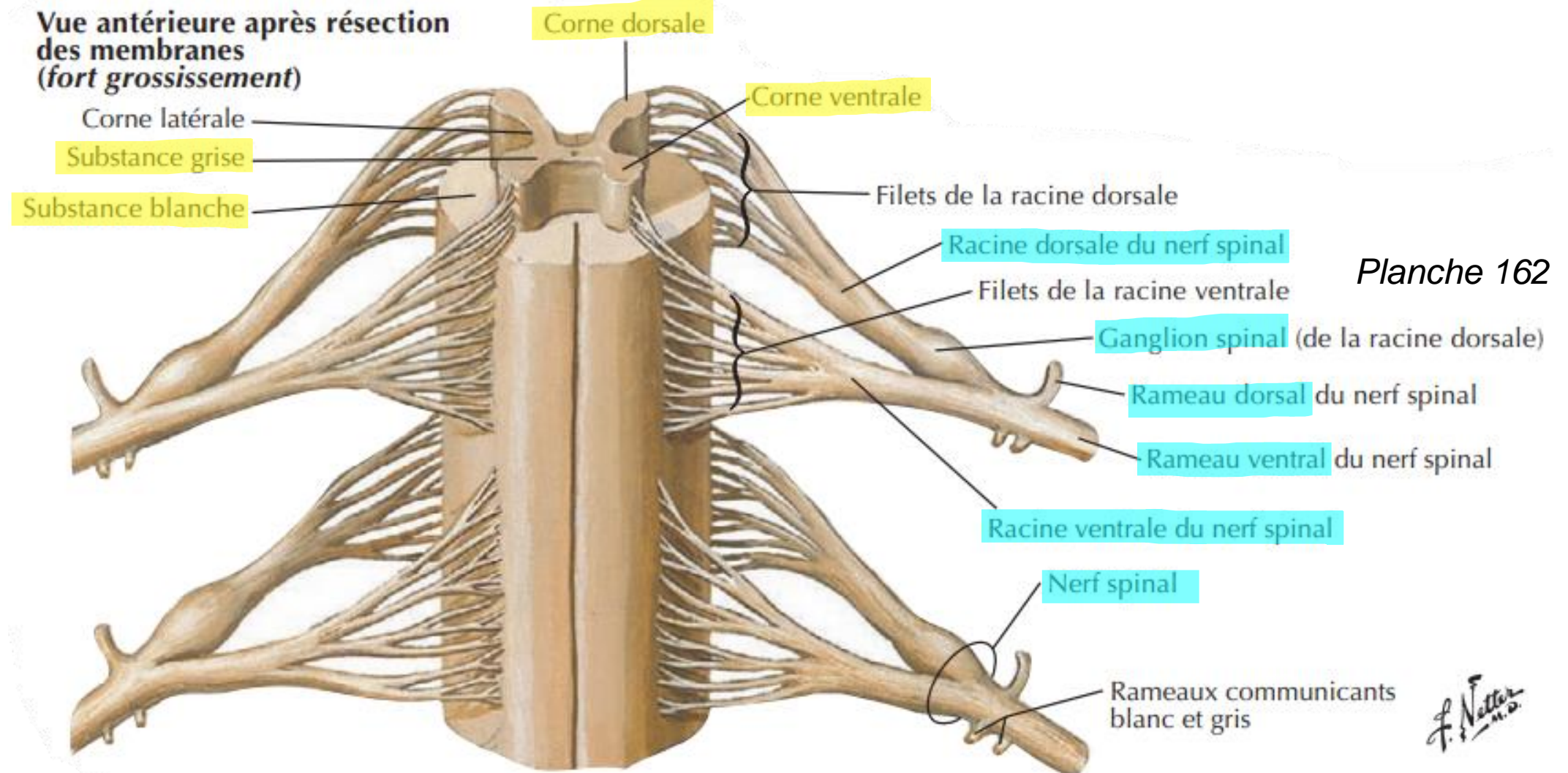
# MOELLE SPINALE



# Moelle Spinale

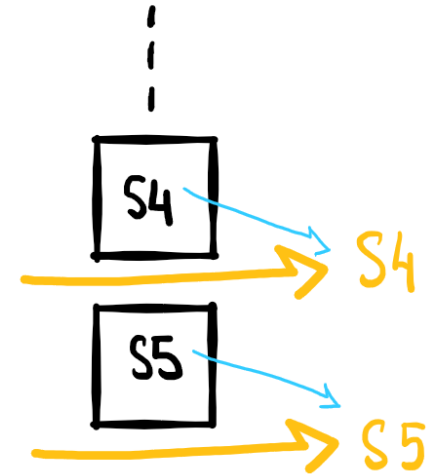
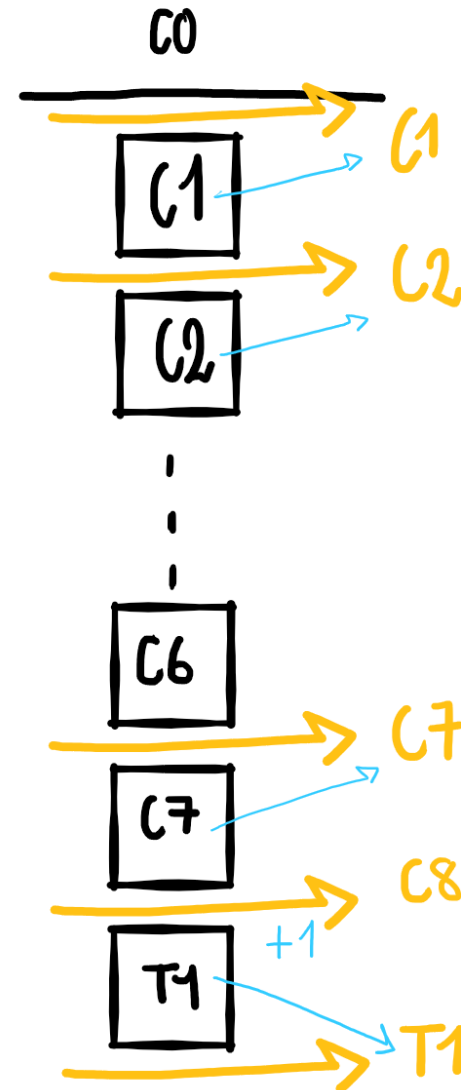


# Moelle Spinale (vue de face)



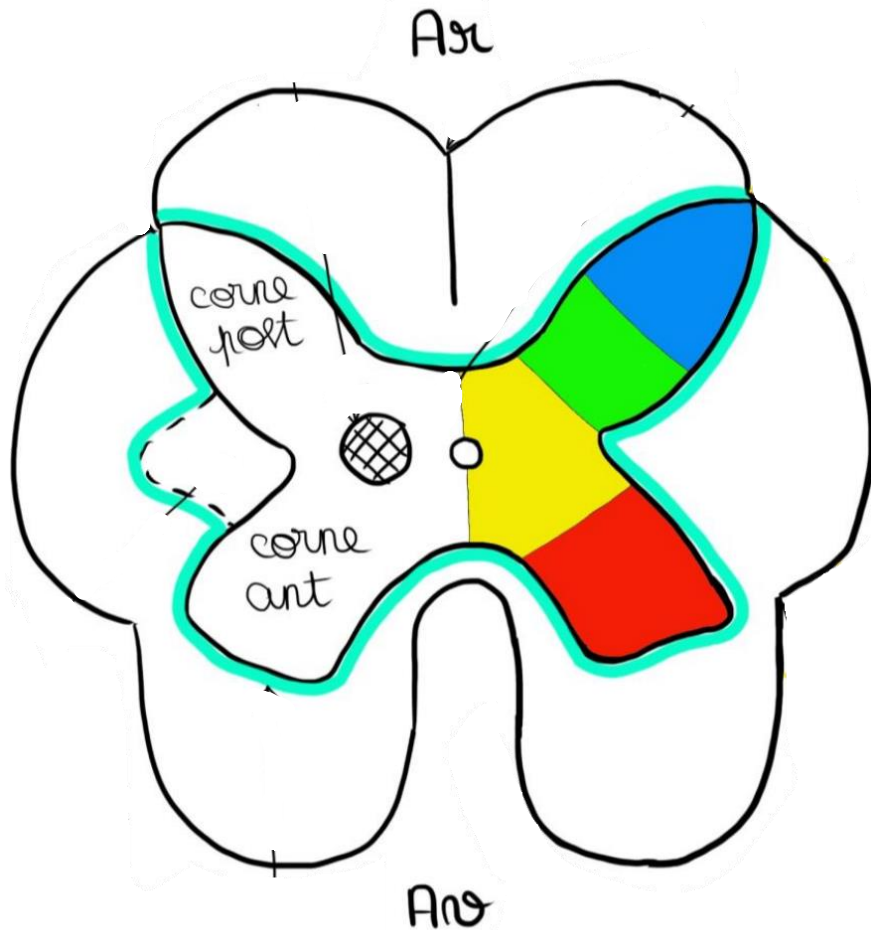
# Nommer les nerfs





- Entre vrtbr C1 → C7 : nom de la vertebre inférieure
- A partir de T1 jusqu'à la fin : nom de la vertebre supérieure
- Le nerf qui sort entre C7 →





# Moelle Spinale (coupe)



-  somato-motrice
-  végétative
-  proprioceptif
-  extéroceptive