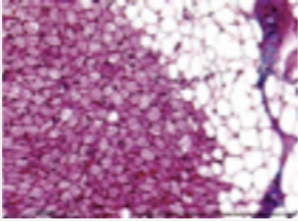
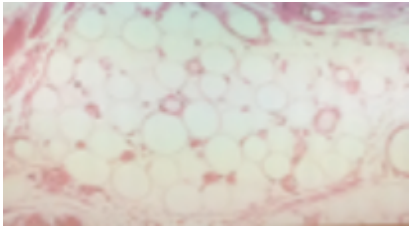
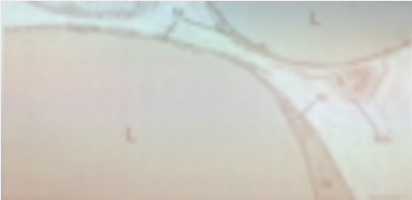
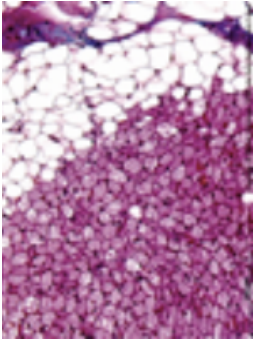
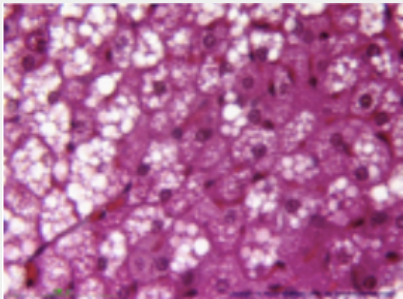
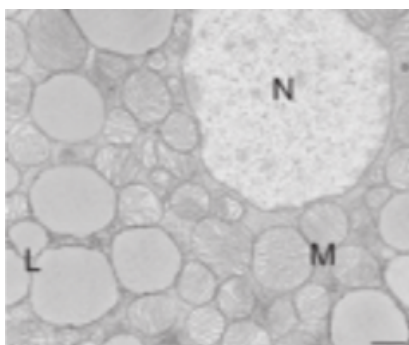
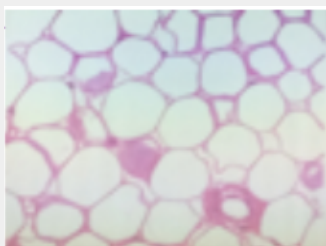


Coupes histologiques

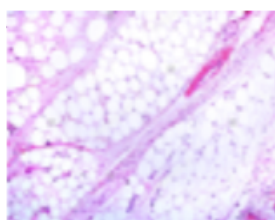
<u>Photo</u>	<u>Légende</u>
	TA brun (gauche) TA blanc (droite) MO
	Tissu adipeux en microscopie optique <i>Paraffine</i>
	Vacuoles lipidiques MO
	Tissu adipeux brun MO
	Tissu adipeux brun MO



Tissu adipeux brun  
ME



Tissu adipeux blanc  
MO



Tissu adipeux blanc  
MO