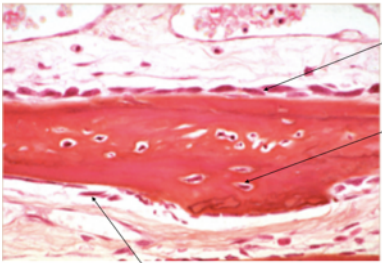
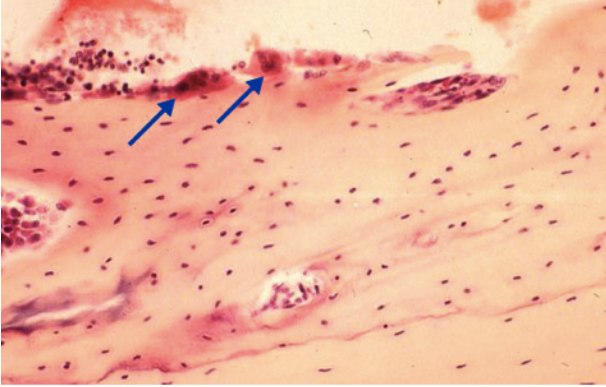

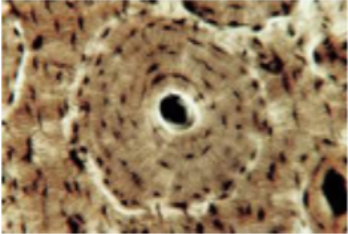
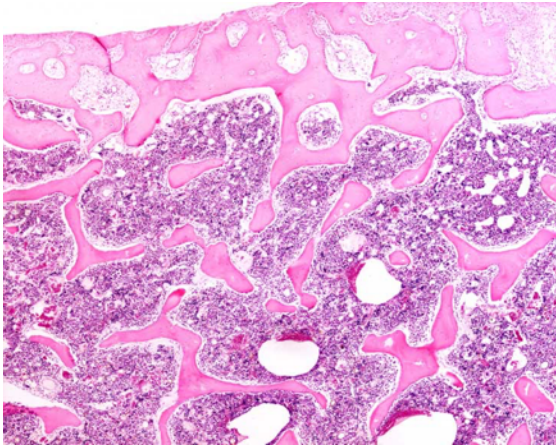
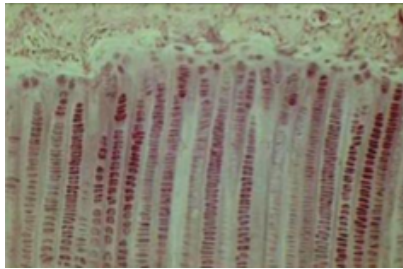


Coupes histologiques

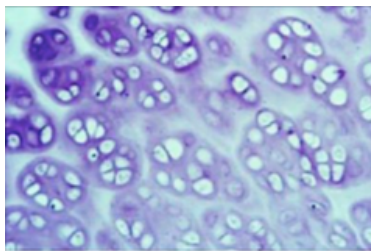
<u>Photo</u>	<u>Légende</u>
 <p>1 : Ostéoblastes</p> <p>2 : Ostéocytes</p> <p>3 : Ostéoclastes</p> <p>MO</p>	<p>Cellules osseuses MO</p>
	<p><i>Ostéoblastes</i> <i>Photo bonus</i></p>
 <p>resorption bay</p> <p>osteoclast</p> <p>bone</p>	<p>Ostéoclaste MO</p>
	<p>Tissu osseux compact ou tissu haversien MO</p>



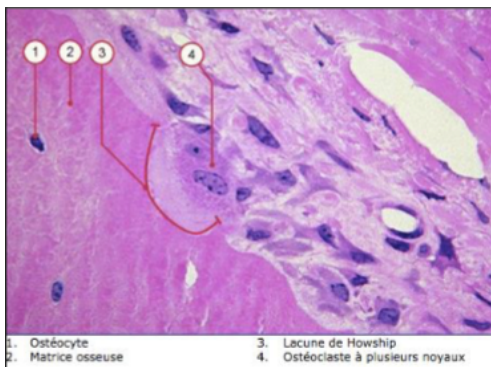
Tissu osseux spongieux ou trabéculaire
MO



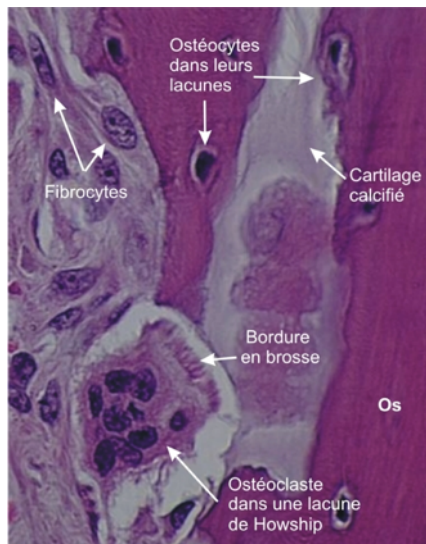
Groupes isogéniques axiaux



Groupes isogéniques coronaires



Résorption osseuse
MO



*Ostéoclastes et résorption osseuse
Photo bonus pour bien voir la bordure en
brosse ;)*

Schéma (page 1 de la ronéo 3) :

CROISSANCE D'UN OS LONG

